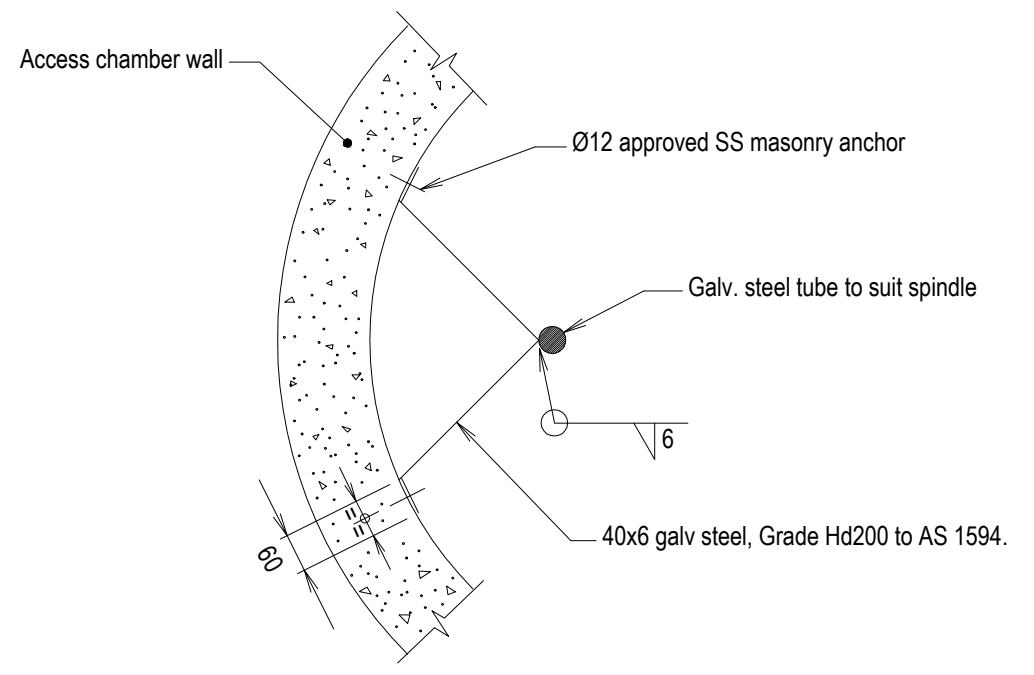
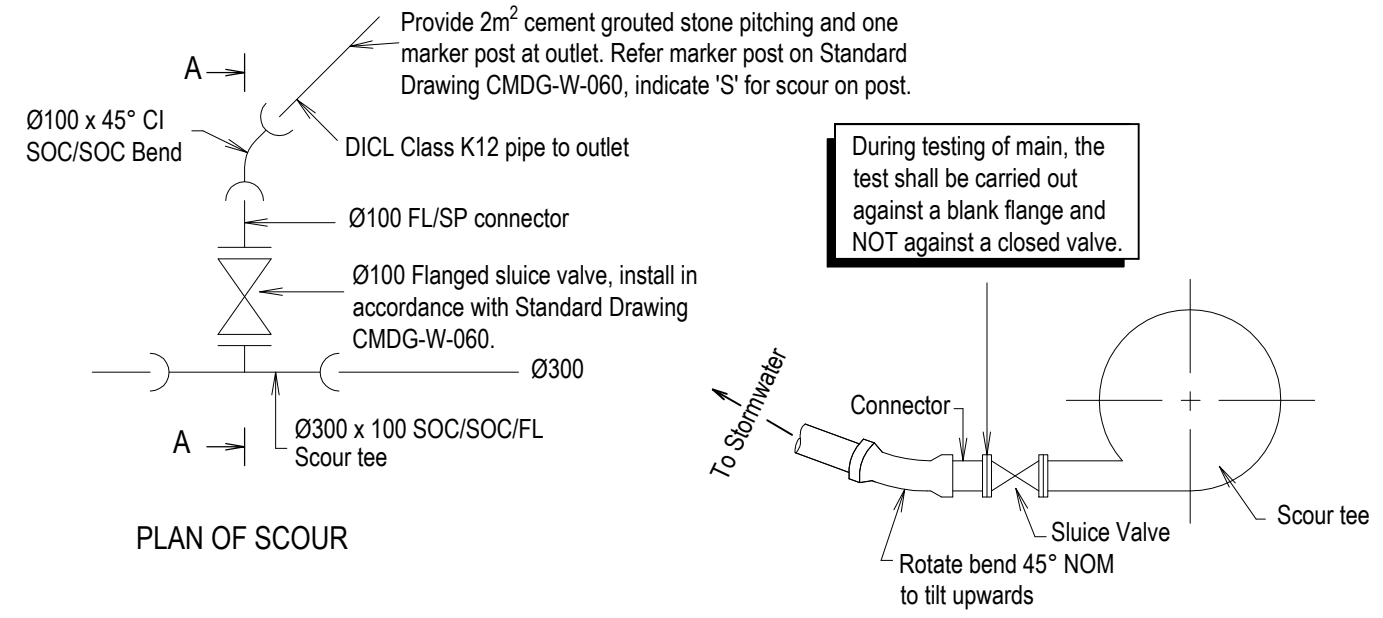


**ELEVATION  
SCOUR DETAIL AT ACCESS CHAMBER**  
(Where Specified by Council)



**SECTION B-B  
BRACKET DETAIL**



**PLAN OF SCOUR**

**SCOUR DETAIL**

**SECTIONAL ELEVATION OF  
SCOUR TEE AT A-A**

**NOTES**

1. Refer Standard Drawings CMDG-S-020 and CMDG-S-025 for details of access chambers and covers.
2. Where foundation bearing pressure is less than 50kPa, excavate and replace unsatisfactory material with compacted CBR15 material to the depth ordered by the Superintendent.
3. Concrete N25 in accordance with AS 1379 Supp 1-1997/Amdt 1-2000 and AS 3600-2001/Amdt 2-2004.
4. All welds to AS 1554. All welding symbols to AS 1101.3.-2005.
5. The location of the scour valve and extent of scour discharge pipe are indicated on project drawings.
6. All dimensions in millimetres.
7. The purpose of the scour system is to release water and remove any sedimentation that maybe in the water reticulation network.

APPLICABILITY TABLE							
Council	BSC	CHRC	GRC	IRC	LSC	MRC	RRC
Applicable	Yes	Yes	Yes	Yes	Yes	Yes	Yes

REVISIONS	DATE
F DRAWING REFERENCES AMENDED	12/2017
E IRC ADDED	11/2016
D GRC AND LSC ADDED	09/2014
C NOTE 2 AMENDED	02/2014
B RRC AMENDMENTS	05/2011
A ORIGINAL ISSUE	01/2010

**DISCLAIMER.**  
The authors and sponsoring organisations shall have no liability or responsibility to the user or any other person or entity with respect to any liability, loss or damage caused or alleged to be caused, directly or indirectly, by the adoption and use of these Standard Drawings including, but not limited to, any interruption of service, loss of business or anticipatory profits, of consequential damages resulting from the use of these Standard Drawings. Persons must not rely on these Standard Drawings as the equivalent of, or a substitute for, project-specific design and assessment by an appropriately qualified professional.

**Capricorn Municipal Development Guidelines**  
Incorporating:  
Banana Shire Council (BSC) Livingstone Shire Council (LSC)  
Central Highlands Regional Council (CHRC) Maranoa Regional Council (MRC)  
Gladstone Regional Council (GRC) Rockhampton Regional Council (RRC)  
Isaac Regional Council (IRC)

**SCOUR DETAILS**

ROADS						
STANDARD DRAWING						
CMDG-W-080						
REV.	A	B	C	D	E	F