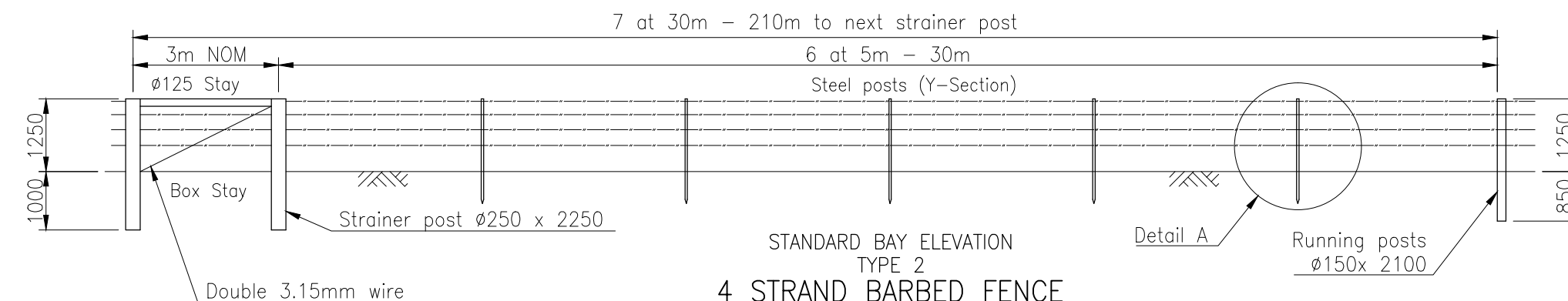
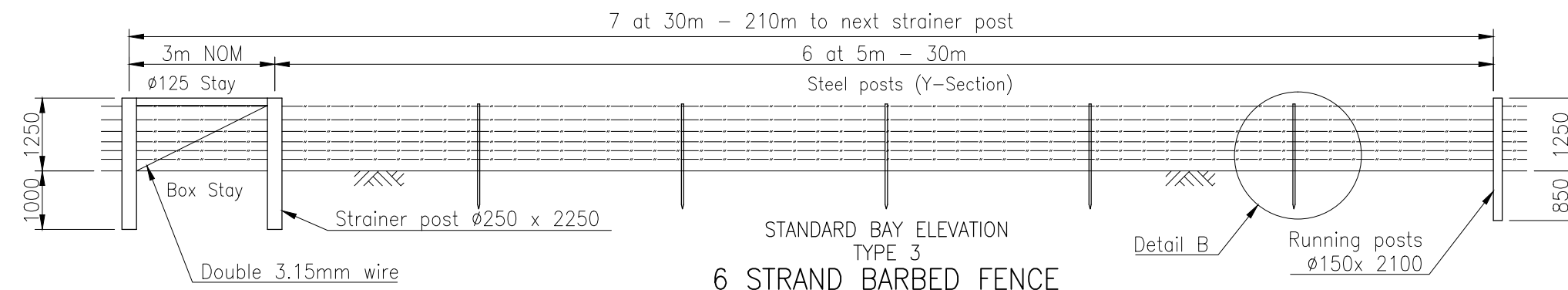


TYPE 1  
4 STRAND BARBED FENCE



TYPE 2  
4 STRAND BARBED FENCE



TYPE 3  
6 STRAND BARBED FENCE

NOTES:

1. Timber posts and struts shall be of approved hardwood.
2. All buried timber to be creosoted to AS 1143.
3. Steel posts are standard 1.8m (6 ft) BHP star pickets. Black tar, bronze star or galvanized to AS 1650, refer project documentation.
4. At alignment changes of less than 90 degrees, the box stay bisects the angle of change.
5. Galvanized fencing wire to AS 2423.
6. All dimensions in millimeters, unless shown otherwise.
7. Barbed wire not approved in urban areas.

APPLICABILITY TABLE								
Council	BSC	CHRC	GRC	IRC	LSC	MRC	RRC	
Applicable	Yes	Yes	Yes	Yes	Yes	Yes	Yes	Yes

REVISIONS	DATE
E IRC ADDED	12/2016
D GRC AND LSC ADDED	09/2014
C MRC ADDED	04/2011
B DRAWING NAME AMENDED	07/2010
A POST AMALGAMATION REVIEW	01/2010

**DISCLAIMER.**

The authors and sponsoring organisations shall have no liability or responsibility to the user or any other person or entity with respect to any liability, loss or damage caused or alleged to be caused, directly or indirectly, by the adoption and use of these Standard Drawings including, but not limited to, any interruption of service, loss of business or anticipatory profits, of consequential damages resulting from the use of these Standard Drawings. Persons must not rely on these Standard Drawings as the equivalent of, or a substitute for, project-specific design and assessment by an appropriately qualified professional.

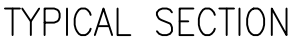
**Capricorn Municipal Development Guidelines**

Incorporating:

Banana Shire Council (BSC)	Livingstone Shire Council (LSC)
Central Highlands Regional Council (CHRC)	Maranoa Regional Council (MRC)
Gladstone Regional Council (GRC)	Rockhampton Regional Council (RRC)
Isaac Regional Council (IRC)	

**FOUR AND SIX STRAND  
BARBED WIRE FENCE**

GENERAL	
STANDARD DRAWING CMDG-G-010	
REV.	A B C D E



### LEGEND

PB PROPERTY BOUNDARY

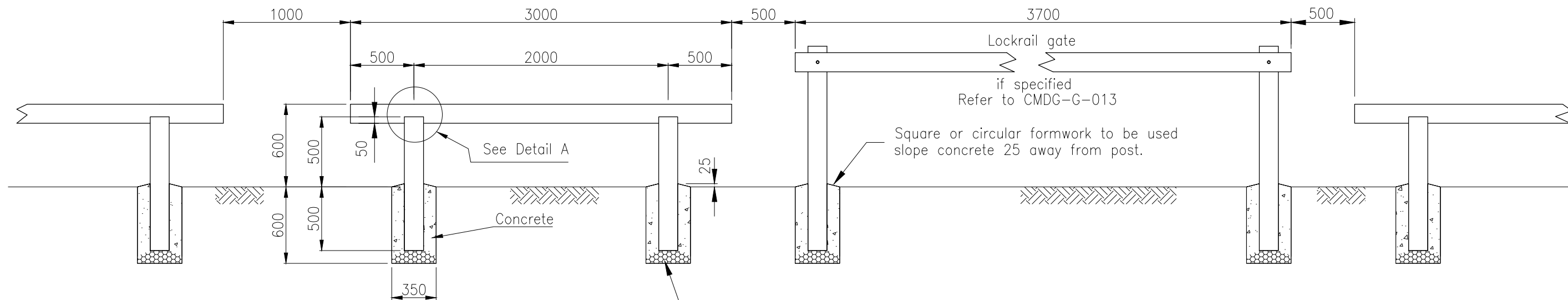
\* Over hang allowed to be over road reserve but not over private property

NOTES:

1. POSTS: Gate posts to be DN 80 (light) galvanised steel tube, to AS 1074.  
Corner, end and every eighth post to be DN 80 (light) galvanised steel tube to AS 1074.  
Intermediate posts and goose necked stays to be DN 50 (light) galvanised steel tube to AS 1074  
Galvanised steel end caps to be provided to all posts.  
All Posts to be Vertical.
2. Corner posts to be adopted where the change in angle in horizontal alignment exceeds 20 degrees.
3. Stays to be provided at end posts, gate posts, corner posts and every eighth post.
4. Standard couplings (down-ee fittings) may be used as an alternative to welds. For all connections except goose necked stays which shall be welded to posts.
5. All welds to be 5 thick continuous fillet welds to AS 1554 with cold galvanising treatment to completed welds.
6. Cables to be formed from two 3.15mm diameter wires twisted together and installed in accordance with AS 1725.
7. All posts, stays and cables are to be galvanised in accordance with AS 1650.
8. All concrete N25 in accordance with AS 1379 and AS 3600.
9. Chain wire to be fixed using 1.6 wire ties as follows:  
Intermediate posts at 3 locations  
End posts at 3 locations  
Horizontal cable at 375 centres to top cable  
Horizontal cable at 600 centres to middle cable  
Horizontal cable at 450 centres to bottom cable
10. Barbed wire to AS 2423.
11. All dimensions in millimetres.
- | APPLICABILITY TABLE |     |      |     |     |     |     |     |
|---------------------|-----|------|-----|-----|-----|-----|-----|
| Council             | BSC | CHRC | GRC | IRC | LSC | MRC | RRC |
| Applicable          | Yes | Yes  | Yes | Yes | Yes | Yes | Yes |

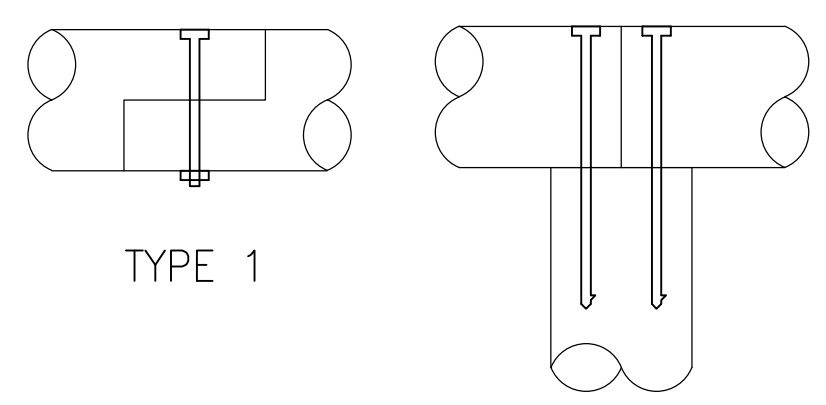
APPLICABILITY TABLE							
Council	BSC	CHRC	GRC	IRC	LSC	MRC	RRC
<b>Applicable</b>	Yes	Yes	Yes	Yes	Yes	Yes	Yes

REVISIONS		DATE	<p>DISCLAIMER.</p> <p>The authors and sponsoring organisations shall have no liability or responsibility to the user or any other person or entity with respect to any liability, loss or damage caused or alleged to be caused, directly or indirectly, by the adoption and use of these Standard Drawings including, but not limited to, any interruption of service, loss of business or anticipatory profits, of consequential damages resulting from the use of these Standard Drawings. Persons must not rely on these Standard Drawings as the equivalent of, or a substitute for, project-specific design and assessment by an appropriately qualified professional.</p>	Capricorn Municipal Development Guidelines		CHAIN WIRE SECURITY FENCE	GENERAL						
				Incorporating:			STANDARD DRAWING						
							CMDG-G-011						
E	IRC ADDED	12/2016					Banana Shire Council (BSC)	Livingstone Shire Council (LSC)	REV.				
D	GRC AND LSC ADDED	09/2014					Central Highlands Regional Council (CHRC)	Maranoa Regional Council (MRC)	A	B	C	D	E
C	MRC ADDED	04/2011					Gladstone Regional Council (GRC)	Rockhampton Regional Council (RRC)					
B	NOTE ADDED RE CRANKED OVERHANG	07/2010					Isaac Regional Council (IRC)						
A	POST AMALGAMATION REVIEW	01/2010											



Unbound pavement material (gravel) to Grading B.  
Tabel 9 of QT Specification MRS11.05, exclude material finer than AS sieve 2.36mm.

### SECTION



TYPE 1

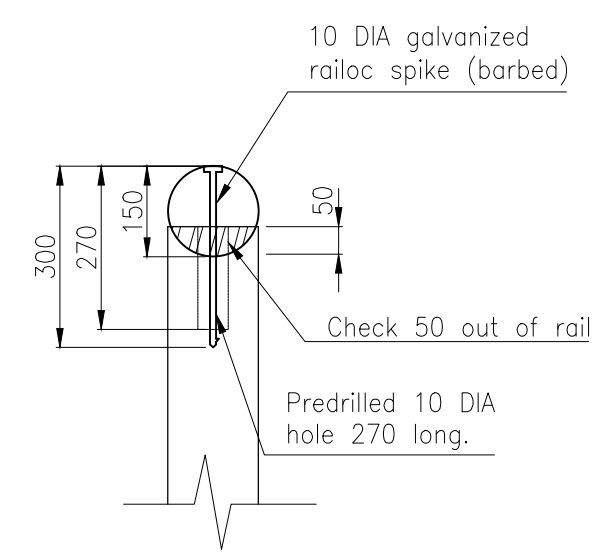
TYPE 2

### TYPICAL RAIL JOINTS FOR CONTINUOUS FENCING

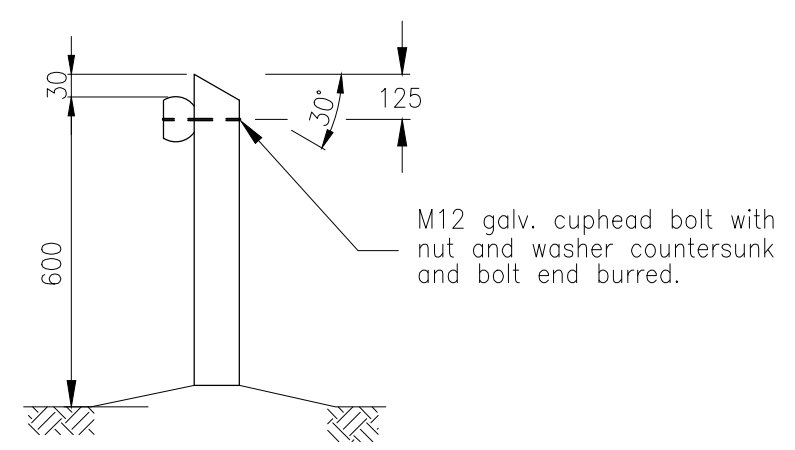
### NOTES:

1. Concrete N25 in accordance with AS 1379 and AS 3600.
2. CCA log barriers to be 150 diameter, Grade A superlogs or equivalent treated to AS 1604.
3. Paint all cut surfaces with CUPRINOL or equivalent.
4. Hexagonal head bolts to AS 1111. Nuts to AS 1112. Washers to AS 1237. Galvanizing to AS 1214.
5. All dimensions in millimetres.
6. Not to be used in clear zone of roadways.

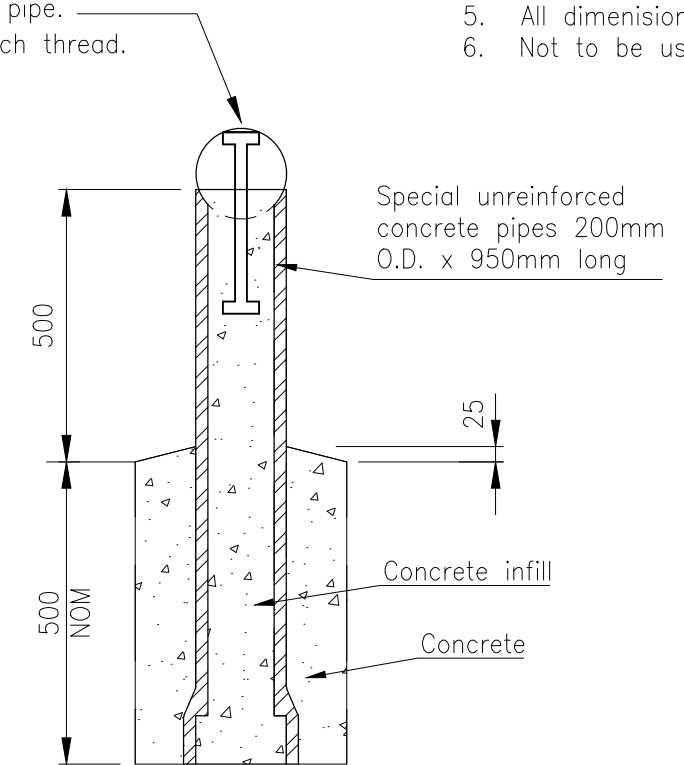
10mm galvanized bolt 300mm long projecting 95mm above pipe.  
Check nut into log, punch thread.



DETAIL A



ALTERNATIVE RAIL



ALTERNATIVE POST

APPLICABILITY TABLE							
Council	BSC	CHRC	GRC	IRC	LSC	MRC	RRC
Applicable	Yes	Yes	Yes	Yes	Yes	Yes	Yes

REVISIONS	DATE
E IRC ADDED	12/2016
D GRC AND LSC ADDED	09/2014
C MRC ADDED	04/2011
B LOCKRAIL GATE REF. TO CMDG-G-013 ADDED	07/2010
A POST AMALGAMATION REVIEW	01/2010

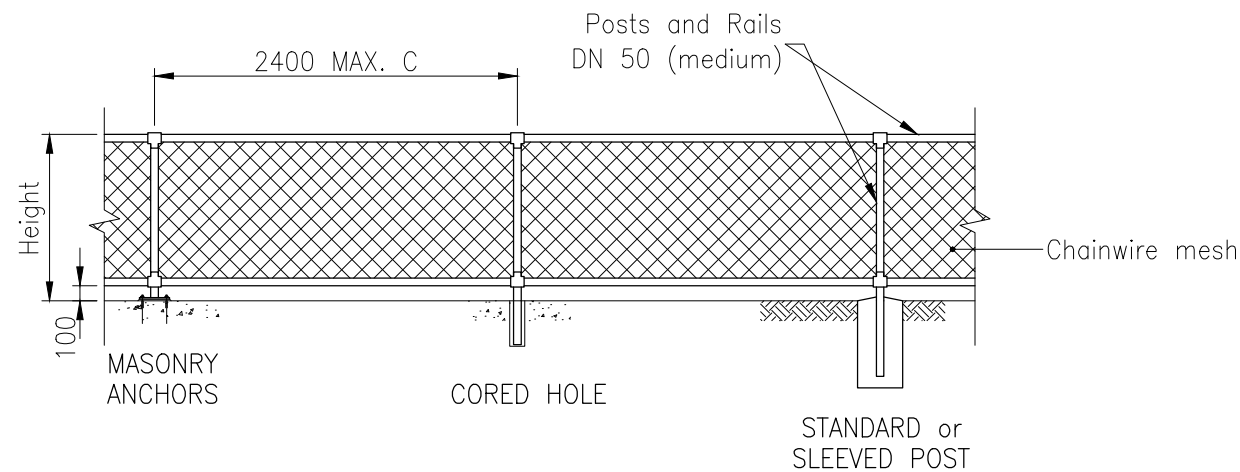
**DISCLAIMER.**  
The authors and sponsoring organisations shall have no liability or responsibility to the user or any other person or entity with respect to any liability, loss or damage caused or alleged to be caused, directly or indirectly, by the adoption and use of these Standard Drawings including, but not limited to, any interruption of service, loss of business or anticipatory profits, of consequential damages resulting from the use of these Standard Drawings. Persons must not rely on these Standard Drawings as the equivalent of, or a substitute for, project-specific design and assessment by an appropriately qualified professional.

**Capricorn Municipal Development Guidelines**  
Incorporating:  
Banana Shire Council (BSC)  
Central Highlands Regional Council (CHRC)  
Gladstone Regional Council (GRC)  
Isaac Regional Council (IRC)  
Livingstone Shire Council (LSC)  
Maranoa Regional Council (MRC)  
Rockhampton Regional Council (RRC)

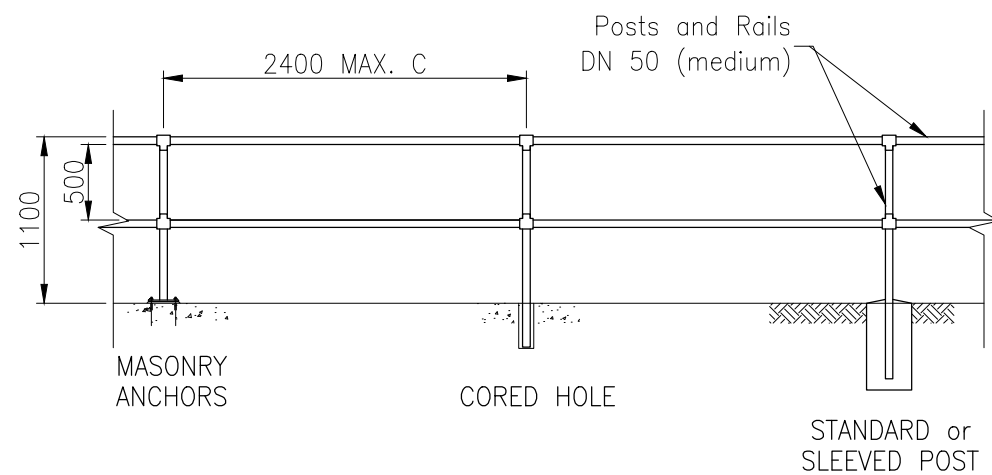
**GENERAL LOG BARRIER FENCE**

ROADS	
STANDARD DRAWING	
CMDG-G-012	
REV.	A B C D E

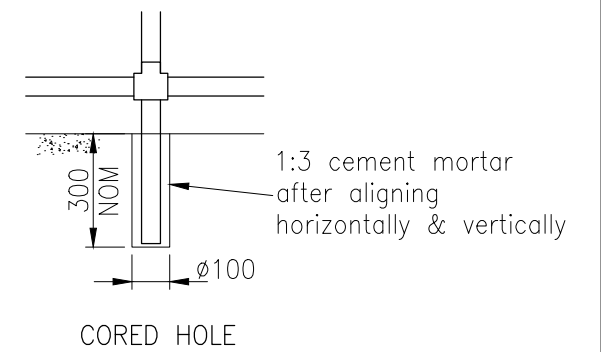
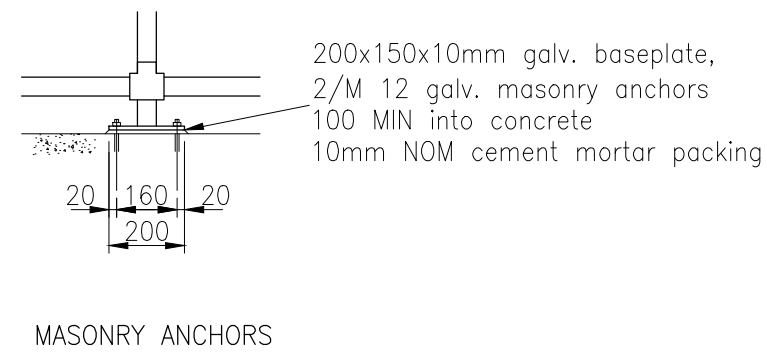
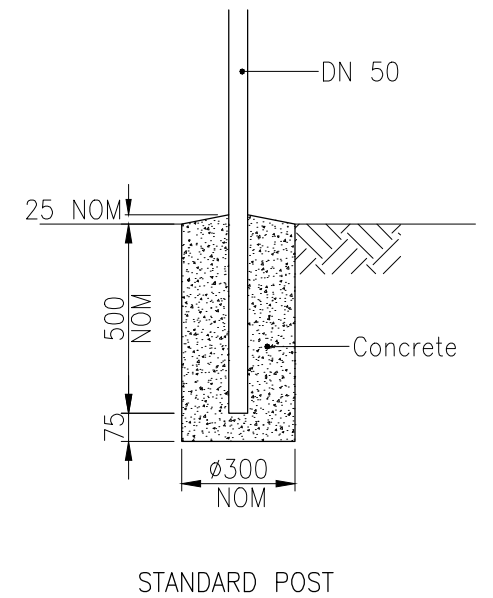
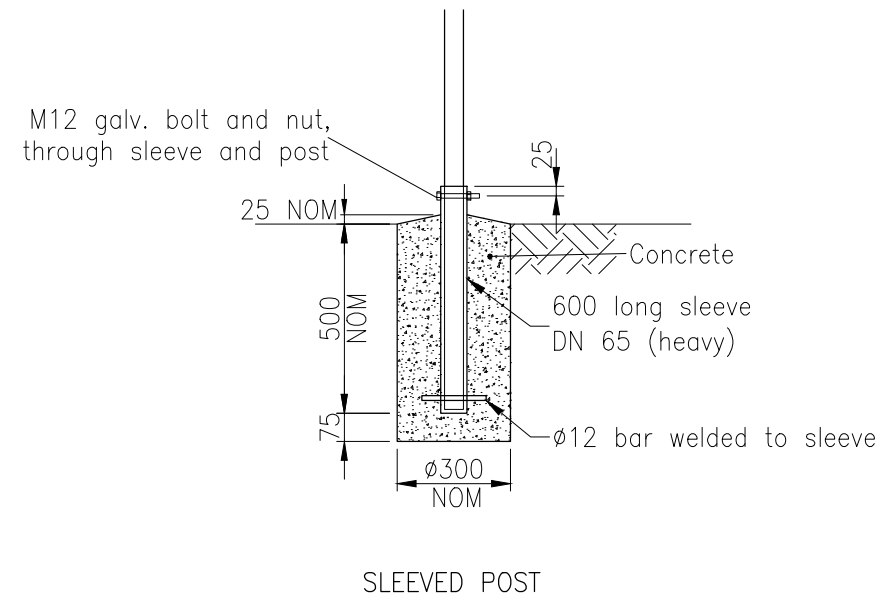




TYPE 1A (Height - 1100)  
TYPE 1B (Height - 1350)



TYPE 2



## FOOTING DETAILS

### NOTES:

1. Refer project drawings for type of fence to be installed and type of footing to be adopted.
2. Construction of posts & rails shall be done using standard coupling connections only (no welds).
3. Galvanised chainwire to be 2.6mm thick x 50 mesh to AS 2423.
4. Ø12 bars, Grace 250 steel to AS2423.
5. Hexagonal head bolts to AS 1111.  
Nuts to AS 1112.  
Washers to AS 1237.  
Galvanising to AS 1214.
6. All rails and posts galvanised steel tube to AS 1074.
7. Concrete N25 in accordance with AS 1379 and AS 3600.
8. All dimensions in millimetres.

### APPLICABILITY TABLE

Council	BSC	CHRC	GRC	IRC	LSC	MRC	RRC
Applicable	Yes	Yes	Yes	Yes	Yes	Yes	Yes

REVISIONS	DATE
D	IRC ADDED
C	GRC AND LSC ADDED
B	MRC ADDED
A	POST AMALGAMATION REVIEW

**DISCLAIMER.**  
The authors and sponsoring organisations shall have no liability or responsibility to the user or any other person or entity with respect to any liability, loss or damage caused or alleged to be caused, directly or indirectly, by the adoption and use of these Standard Drawings including, but not limited to, any interruption of service, loss of business or anticipatory profits, of consequential damages resulting from the use of these Standard Drawings. Persons must not rely on these Standard Drawings as the equivalent of, or a substitute for, project-specific design and assessment by an appropriately qualified professional.

## Capricorn Municipal Development Guidelines

Incorporating:

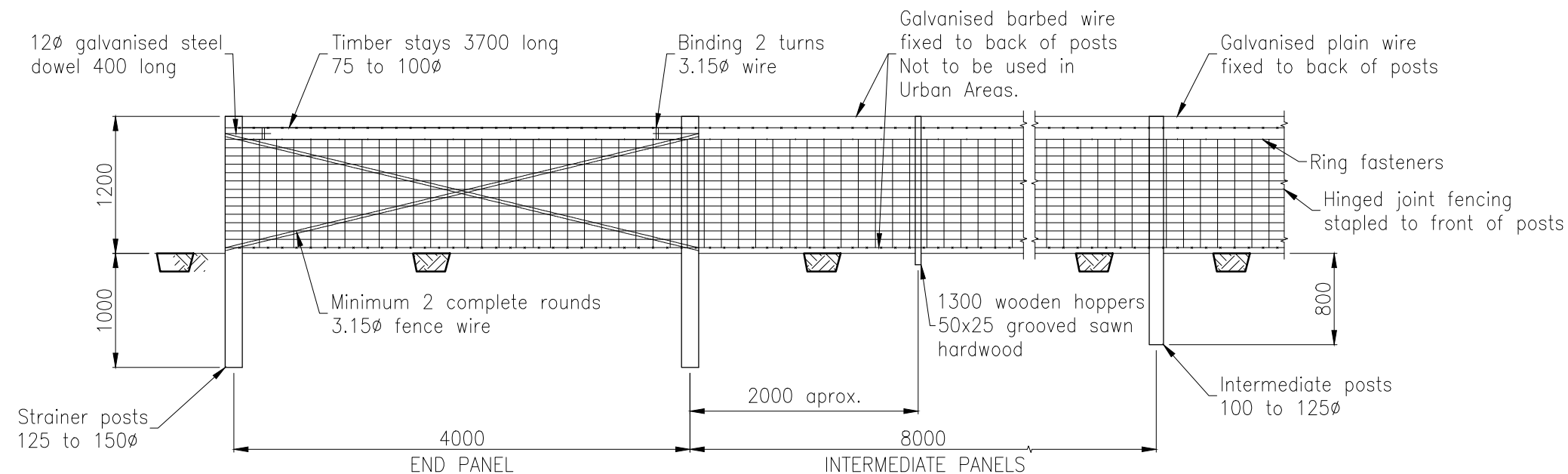
Banana Shire Council (BSC)  
Central Highlands Regional Council (CHRC)  
Gladstone Regional Council (GRC)  
Isaac Regional Council (IRC)  
Livingstone Shire Council (LSC)  
Maranoa Regional Council (MRC)  
Rockhampton Regional Council (RRC)

## TUBULAR STEEL FENCE

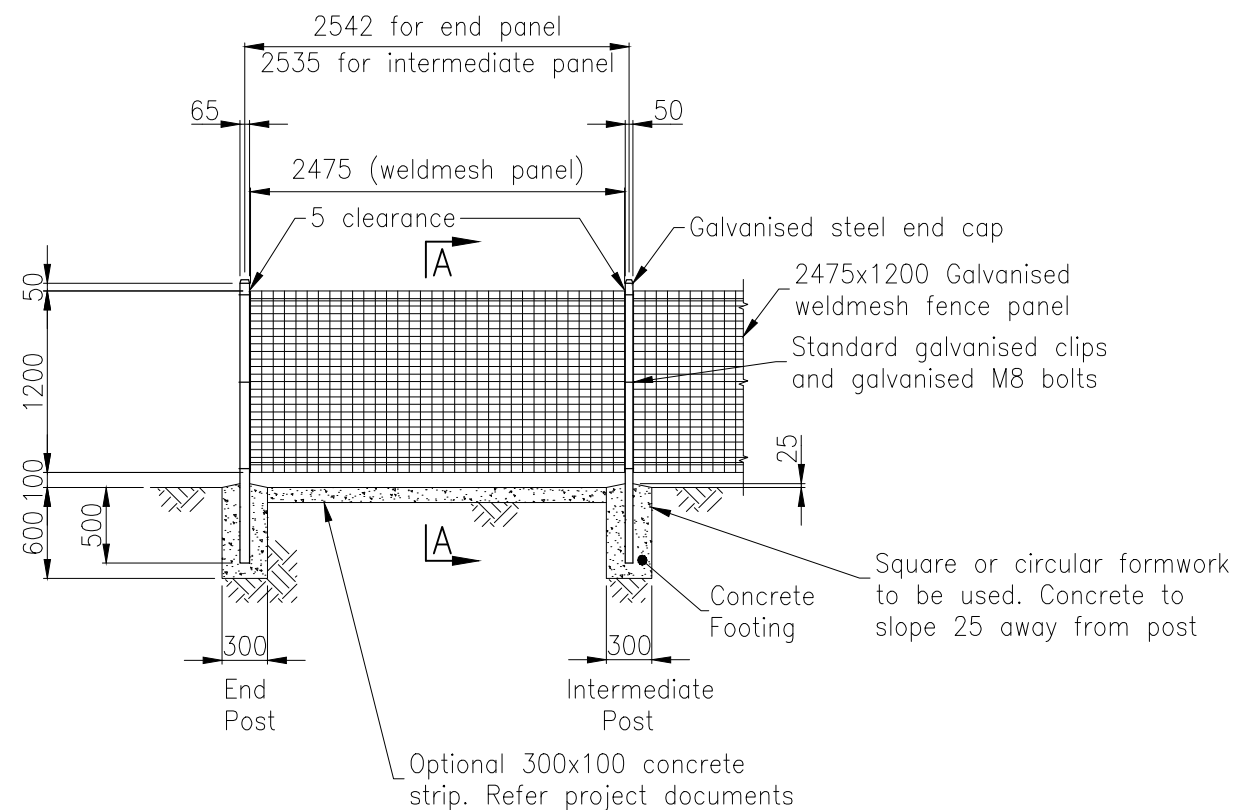
### GENERAL

STANDARD  
DRAWING  
CMDG-G-014

REV. A B C D



## CONTROL FENCE



## ELEVATION

## WELDMESH FENCE

### NOTES

#### A – Weldmesh Fence

1. Gate and end posts to be 65x65x2 galvanised steel section to AS 1163.
2. Intermediate posts to be 50x50x2 galvanised steel section to AS 1163.
3. Panels to be fixed to posts using standard galvanised clips and galvanised M8 bolts.
4. Galvanised to AS 1214 and AS 1650.
5. Concrete N25 in accordance with AS 1379 and AS 3600.
6. Posts are to be vertical.
7. Raked panels are available for slopes up to 1 in 5.
8. Nuts to be spot welded to bolts as an anti-theft deterrent.

#### B – Control Fence

1. All barbed wire, plain wire, hinged joint fencing, staples and ring fasteners to be galvanised to AS 1650.
2. Provide strainer panels at 100 to 140m spacing. Panels to be as for 'End Panels' with an extra 2/3.15mm wire brace as indicated by broken lines.
3. Posts may be tea-tree, split hardwood or sawn timber.
4. Where fences turn 90° adopt an end panel going away in each direction.
5. Dowels, Grade 250 to AS 3679.

#### C – General

1. All dimensions in millimetres unless shown otherwise.

### APPLICABILITY TABLE

Council	BSC	CHRC	GRC	IRC	LSC	MRC	RRC
Applicable	Yes	Yes	Yes	Yes	Yes	Yes	Yes

REVISIONS	DATE
D	IRC ADDED
C	GRC AND LSC ADDED
B	MRC ADDED
A	POST AMALGAMATION REVIEW

**DISCLAIMER.**

The authors and sponsoring organisations shall have no liability or responsibility to the user or any other person or entity with respect to any liability, loss or damage caused or alleged to be caused, directly or indirectly, by the adoption and use of these Standard Drawings including, but not limited to, any interruption of service, loss of business or anticipatory profits, of consequential damages resulting from the use of these Standard Drawings. Persons must not rely on these Standard Drawings as the equivalent of, or a substitute for, project-specific design and assessment by an appropriately qualified professional.

### Capricorn Municipal Development Guidelines

Incorporating:

Banana Shire Council (BSC)

Central Highlands Regional Council (CHRC)

Gladstone Regional Council (GRC)

Isaac Regional Council (IRC)

Livingstone Shire Council (LSC)

Maranoa Regional Council (MRC)

Rockhampton Regional Council (RRC)

### WELDMESH FENCE AND CONTROL FENCE

#### GENERAL

#### STANDARD DRAWING

CMDG-G-015

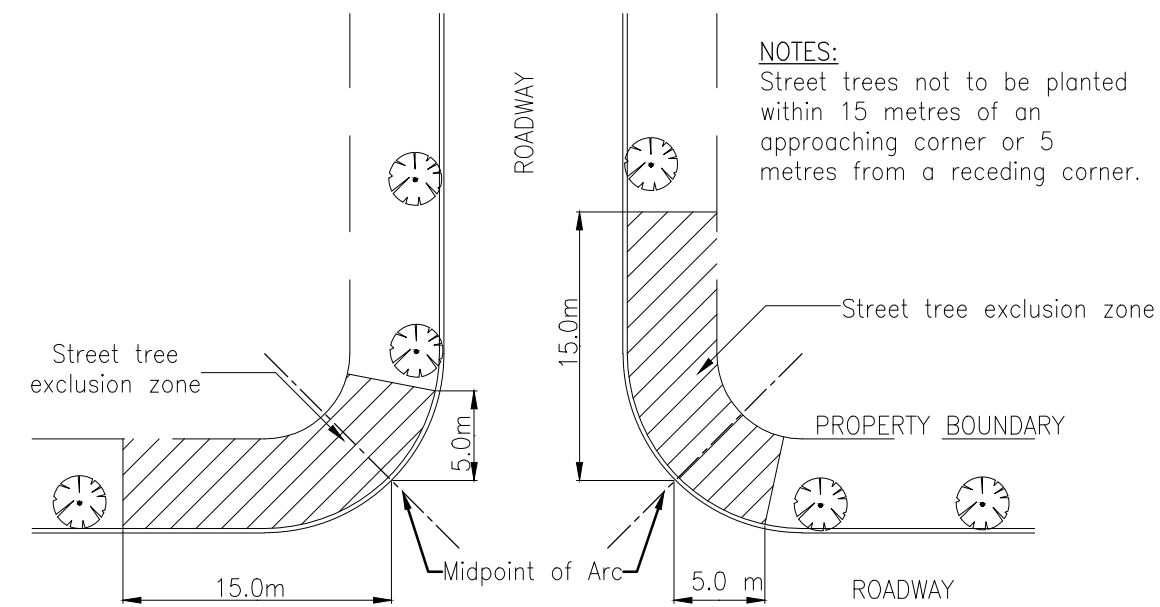
REV. A B C D

SET OUT:

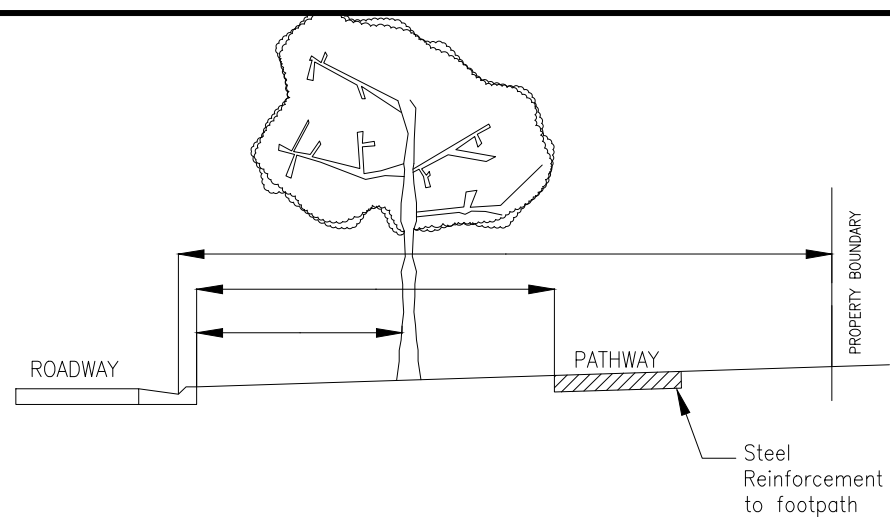
- 1. Footpath tree planting for private works should be planted at 3 metre centres under power lines and 10.0 – 20.0m centres elsewhere. Variations to this may be made to accommodate driveways, avoid power poles etc.
- 2. To ensure effective street lighting, plant trees not closer than 9 metres to a street light. The trees should be set back from the rear of the kerb at a distance of 1.0m.
- 3. Minimum 15m exclusion zone for intersection planting may be amended by council based on road layout and design speed.
- 4. All footpath trees must have minimum 0.6m deep root control barrier to back of adjacent kerb.

SPECIES SELECTION:

- 1. Trees should be selected in place of shrubs or palms. Shrubs obscure sight lines for pedestrian and vehicle safety, and palms provide little shade and cannot be grown under power lines.
- 2. Trees however, create shade and character, and enhance the visual quality of the Town’s streets.
- 3. When planting under power lines, ensure the species selected will not grow above 4.0 metres.



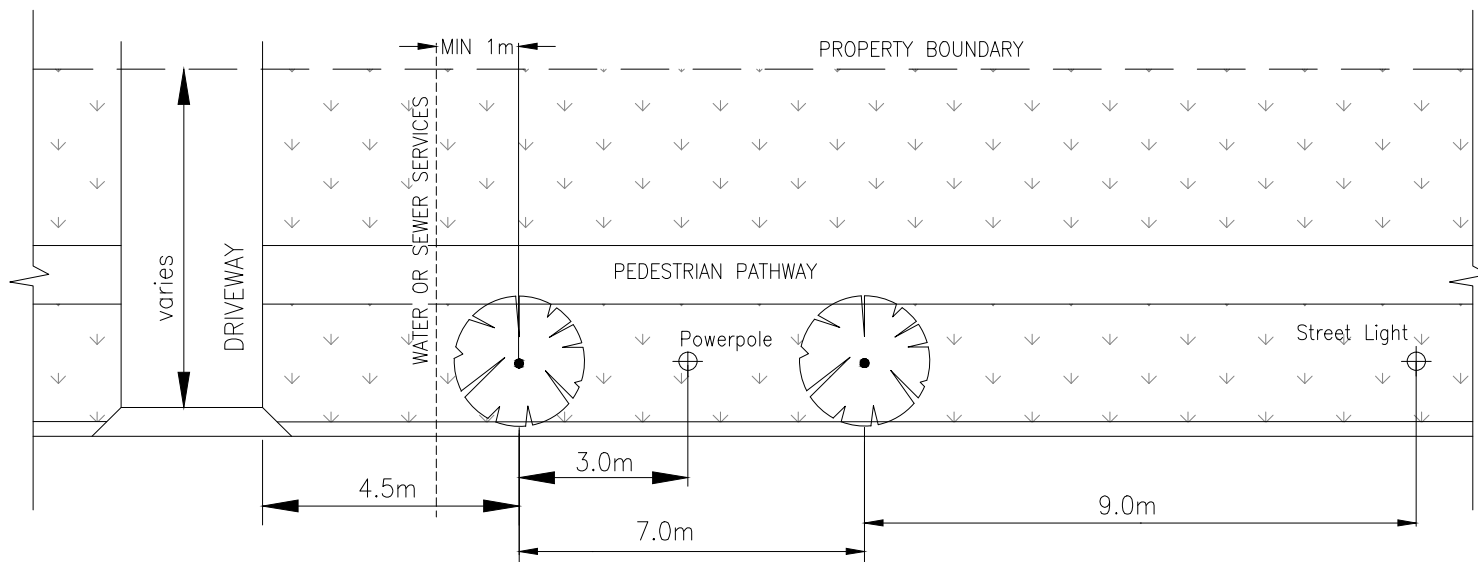
INTERSECTION PLANTING  
not to scale



NOTES:

- 1. Where concrete paths are not required as a consent condition and the location of services allow, trees will be located mid-way between back of kerb and property boundary (where space permits, trees will be located as far from roads, kerbs and paths as possible).
- 2. Landscape design must integrate with civil design to ensure the side of the road to carry an intended footpath/ bikeway is not constrained by above or below ground utilities.
- 3. For offset distances refer to: BSC Standard Drawings "Type Cross Sections in Urban Access Place"

STREET TREE PLANTING BETWEEN KERB AND FOOTPATH



NOTES:

In all cases the following minimum offsets from known features apply:

- streetlights - 9.0 metres
- driveways - 4.5 metres
- service pits/ inspection boxes - 3.0 metres
- stormwater kerb adaptors - 1.0m
- kerbs - 1.0 metres

- pedestrian crossings and bus-stops
  - 20.0 metres on approach
  - 6.0 metres on departure
- Ergon pad mounted transformer - 3.0 metres
- Fire hydrants - 3.0m
- Receding corner - 5.0m
- Approaching corner - 15.0m
- Power pole - 3.0m

MID-BLOCK PLANTING  
not to scale

VERGE FOOTPATH TREE PLANTING

APPLICABILITY TABLE							
Council	BSC	CHRC	GRC	IRC	LSC	MRC	RRC
Applicable	Yes	Yes	Yes	Yes	Yes	Yes	Yes

REVISIONS		DATE
F	IRC ADDED	12/2016
E	GRC AND LSC ADDED	09/2014
D	SERVICE CROSSING LOCATION CLARIFIED	07/2012
C	MRC ADDED	04/2011
B	NOTE 3 AMENDED	07/2010
A	POST AMALGAMATION REVIEW	01/2010

**DISCLAIMER.**  
The authors and sponsoring organisations shall have no liability or responsibility to the user or any other person or entity with respect to any liability, loss or damage caused or alleged to be caused, directly or indirectly, by the adoption and use of these Standard Drawings including, but not limited to, any interruption of service, loss of business or anticipatory profits, of consequential damages resulting from the use of these Standard Drawings. Persons must not rely on these Standard Drawings as the equivalent of, or a substitute for, project-specific design and assessment by an appropriately qualified professional.

**Capricorn Municipal Development Guidelines**

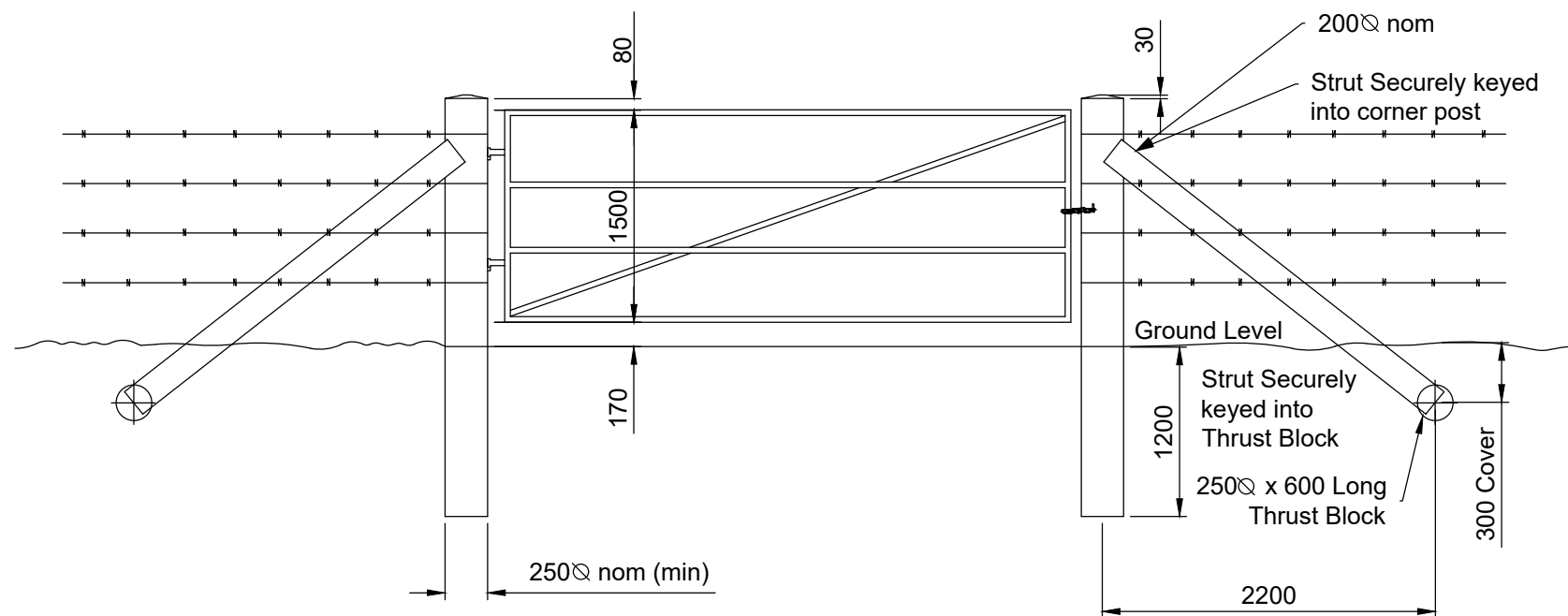
Incorporating:

Banana Shire Council (BSC)  
Central Highlands Regional Council (CHRC)  
Gladstone Regional Council (GRC)  
Isaac Regional Council (IRC)

Livingstone Shire Council (LSC)  
Maranoa Regional Council (MRC)  
Rockhampton Regional Council (RRC)

STREET PLANTING

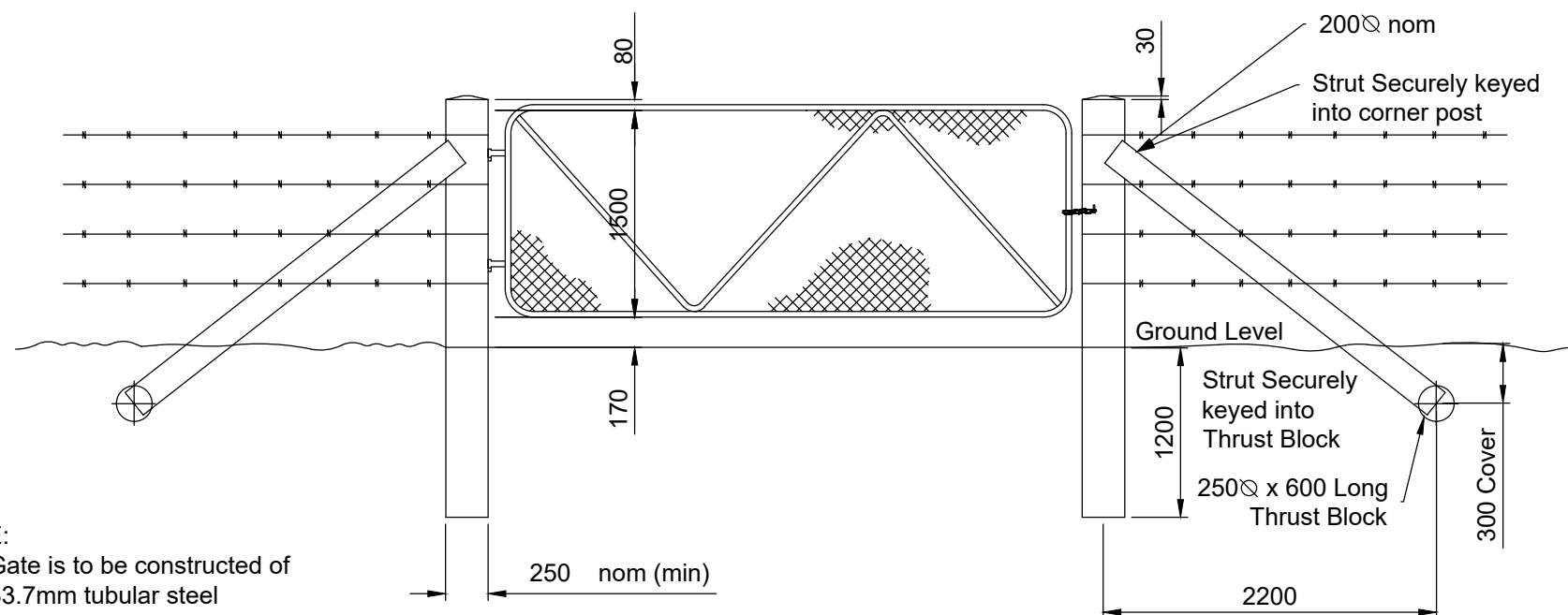
GENERAL							
STANDARD DRAWING							
CMDG-G-016							
REV.	A	B	C	D	E	F	



- NOTE:
1. Gate is to be constructed of 40mm square steel tubing 2mm thick min
  2. All gate fittings to be galvanised
  3. Minimum gate width 3m

## STANDARD COUNCIL GATE TYPE 1

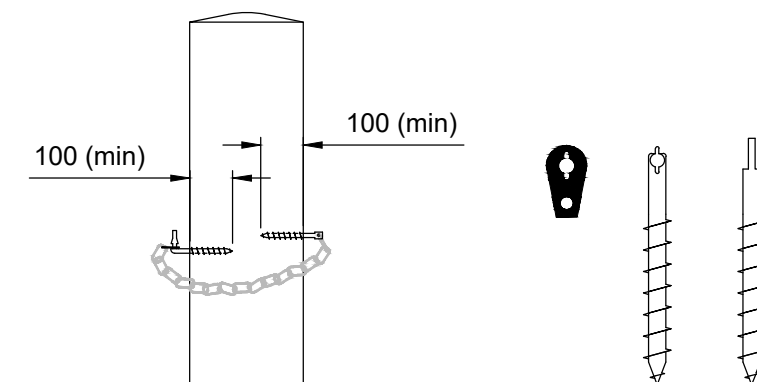
Scale 1:50



- NOTE:
1. Gate is to be constructed of 33.7mm tubular steel
  2. All gate fittings to be galvanised
  3. Minimum gate width 3m

## STANDARD COUNCIL GATE TYPE 2

Scale 1:50



## TOP VIEW

Scale 1:5

## TYPICAL CROSS SECTION

Scale 1:20

## GATE FASTENERS

### APPLICABILITY TABLE

Council	BSC	CHRC	GRC	IRC	LSC	MRC	RRC
Applicable	Yes	Yes	No	Yes	Yes	Yes	No
Applicable DWG	Refer GRC Gates and Grids Policy P-2014/6						

\*Dimensions are in Millimetres unless otherwise shown

REVISIONS	DATE
F	12/2021
E	12/2016
D	08/2015
C	09/2014
B	04/2011
A	07/2010

**DISCLAIMER.**  
The authors and sponsoring organisations shall have no liability or responsibility to the user or any other person or entity with respect to any liability, loss or damage caused or alleged to be caused, directly or indirectly, by the adoption and use of these Standard Drawings including, but not limited to, any interruption of service, loss of business or anticipatory profits, of consequential damages resulting from the use of these Standard Drawings. Persons must not rely on these Standard Drawings as the equivalent of, or a substitute for, project-specific design and assessment by an appropriately qualified professional.

## Capricorn Municipal Development Guidelines

Incorporating:

Banana Shire Council (BSC) Livingstone Shire Council (LSC)  
Central Highlands Regional Council (CHRC) Maranoa Regional Council (MRC)  
Gladstone Regional Council (GRC) Rockhampton Regional Council (RRC)  
Isaac Regional Council (IRC)

## STANDARD COUNCIL GATE

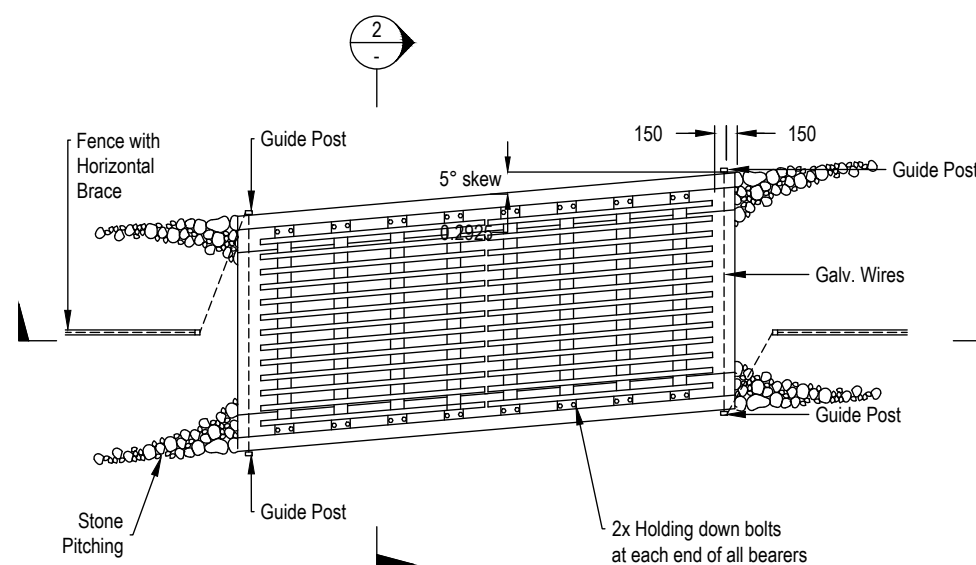
GENERAL

STANDARD  
DRAWING

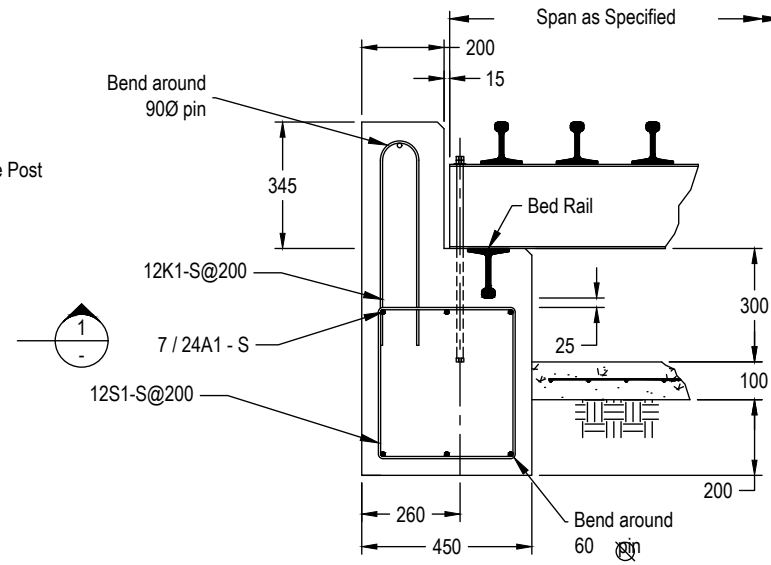
CMDG-G-017

REV. A B C D E F

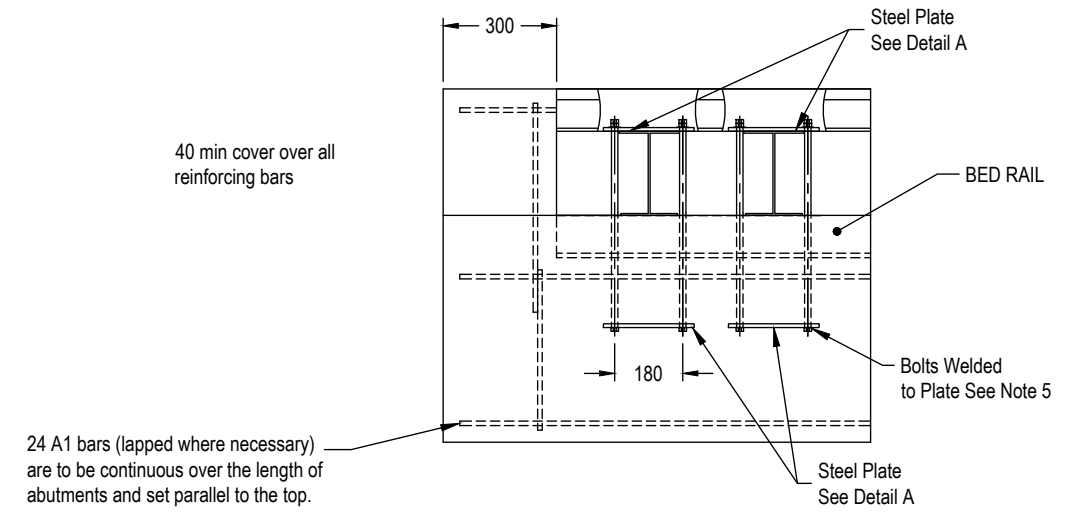




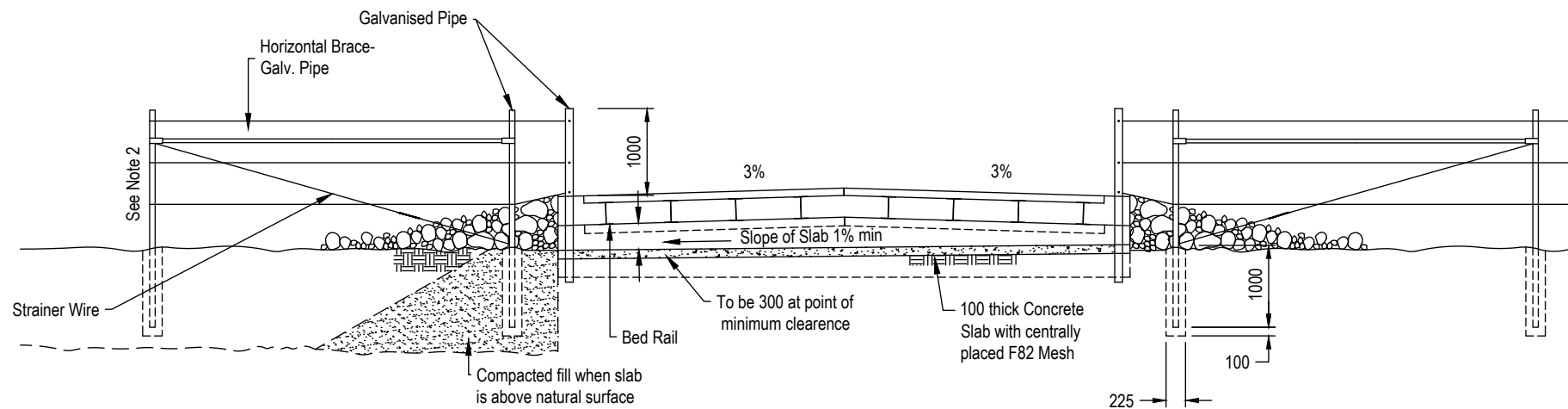
PLAN VIEW - 2.7m SPAN  
SCALE 1:100



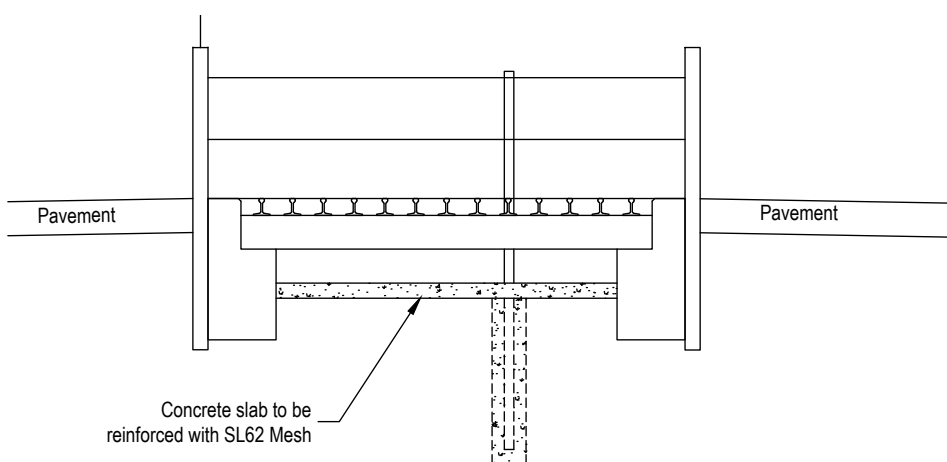
ABUTMENT DETAIL 1  
SCALE 1:20



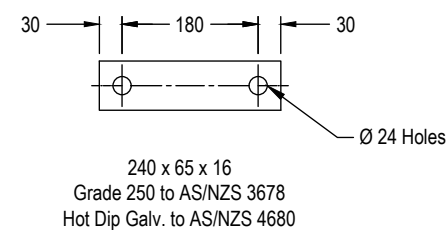
ABUTMENT DETAIL 2  
SCALE 1:20



CROSS SECTION 1  
SCALE 1:75



CROSS SECTION 2  
SCALE 1:50

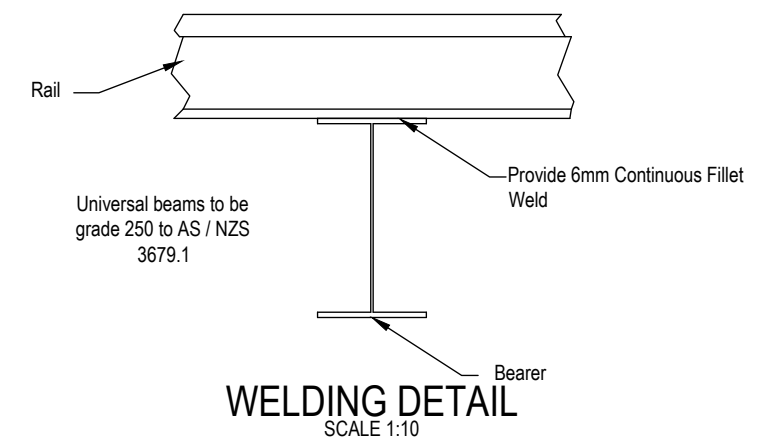


DETAIL A  
SCALE 1:10

## NOTES:

- Grids can be either pre-cast units or cast in-situ construction. Grid rails to be made from new 22kg/m railway iron or RHS. All grids require RPEQ certification.
- Widths of Grid change depending on Road Hierarchy/ Category. For widths of grid refer to Local Council's Grid Policy
- All grids must have an accompanying gate. Refer to Standard Drawing CMDG-G-017.
- Dimensions are in millimeters unless otherwise shown
- Standard Grid Spans for 1.9 or 2.7m only
- Holding down bolts M20 x 600, Grade 4.6, 70 thread with M20 nuts & locknuts, grade 5, galv. to AS 1214 with NS washers.
- Signage and guide posts to be installed as per the latest DTMR MUTCD.

\*Dimensions are in Millimetres unless otherwise shown



WELDING DETAIL  
SCALE 1:10

APPLICABILITY TABLE							
Council	BSC	CHRC	GRC	IRC	LSC	MRC	RRC
Applicable	Yes	Yes	No	No	Yes	Yes	No
Applicable DWG	CMDG-G-020						

REVISIONS	DATE
H DRAWING RENAMED AND APPLICABILITY UPDATED	04/2023
G RRC APPLICABILITY CHANGED TO NO	12/2021
F IRC ADDED	12/2016
E NOTE ADDED	07/2015
D GRC AND LSC ADDED	09/2014
C NOTES AND FURTHER DETAILS ADDED	07/2012

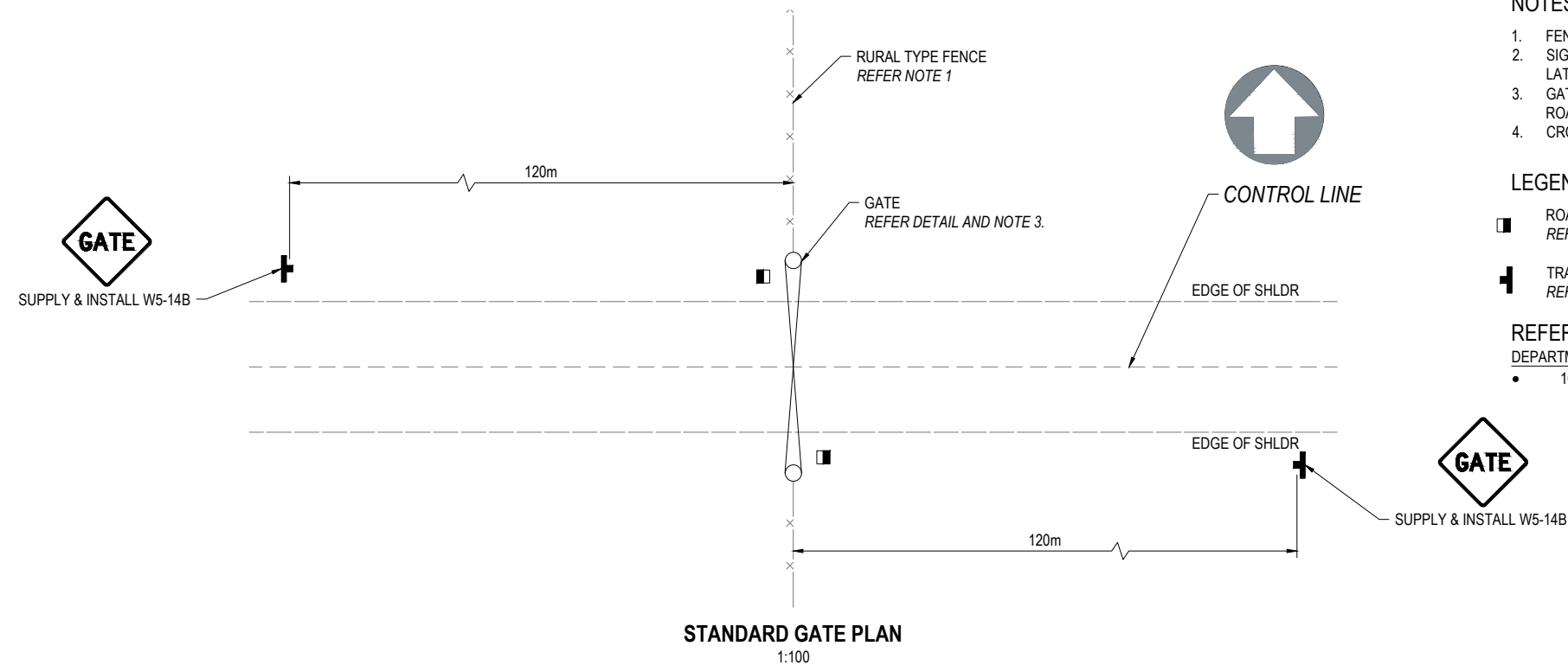
DISCLAIMER.  
The authors and sponsoring organisations shall have no liability or responsibility to the user or any other person or entity with respect to any liability, loss or damage caused or alleged to be caused, directly or indirectly, by the adoption and use of these Standard Drawings including, but not limited to, any interruption of service, loss of business or anticipatory profits, of consequential damages resulting from the use of these Standard Drawings. Persons must not rely on these Standard Drawings as the equivalent of, or a substitute for, project-specific design and assessment by an appropriately qualified professional.

## Capricorn Municipal Development Guidelines

Incorporating:  
Banana Shire Council (BSC) Maranoa Regional Council (MRC)  
Central Highlands Regional Council (CHRC) Rockhampton Regional Council (RRC)  
Gladstone Regional Council (GRC) Isaac Regional Council (IRC)  
Livingstone Shire Council (LSC)

## ALTERNATE COUNCIL GRID

GENERAL	
STANDARD DRAWING	A3
CMDG-G-018	
REV.	C D E F G H



#### NOTES:

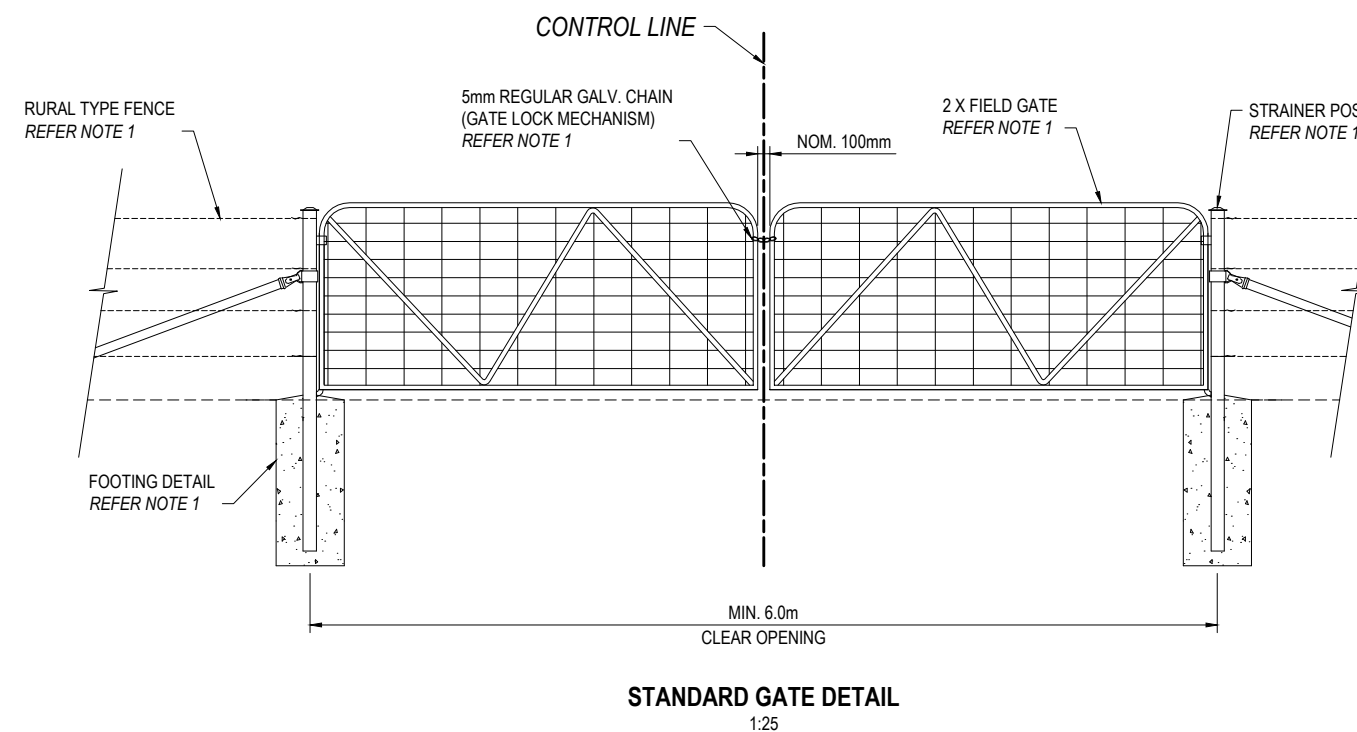
1. FENCE AND GATE DETAILS REFER *DTMR STD. DRG. 1601*.
2. SIGNAGE AND GUIDE POST TO BE INSTALLED AS PER THE LATEST *DTMR MUTCD*.
3. GATES ONLY CONSIDERED ON A LEVEL 8 & 9 SERVICE LEVEL OF ROAD. GATES TO BE CENTRED ACROSS ROAD.
4. CROSSFALL TO BE -5% ON GRAVEL ROADS U.N.O.

#### LEGEND:

- ROAD EDGE GUIDE POST  
REFER NOTE 2
- TRAFFIC SIGN  
REFER NOTE 2

#### REFERENCED DOCUMENTS:

- DEPARTMENT OF TRANSPORT AND MAIN ROADS (DTMR) STANDARD DRAWINGS:
- 1601 FENCING - RURAL FENCE AND GATES CHS POSTS AND STAYS



#### APPLICABILITY TABLE

Council	BSC	CHRC	GRC	IRC	LSC	MRC	RRC
Applicable	No	No	Yes	Yes	No	No	Yes
Applicable DWG	Refer GRC Gates and Grids Policy P-2014/6						



REVISIONS	DATE
C	RRC APPLICABILITY CHANGED TO YES
B	IRC ADDED
A	NEW GRC DRAWING

**DISCLAIMER.**  
The authors and sponsoring organisations shall have no liability or responsibility to the user or any other person or entity with respect to any liability, loss or damage caused or alleged to be caused, directly or indirectly, by the adoption and use of these Standard Drawings including, but not limited to, any interruption of service, loss of business or anticipatory profits, of consequential damages resulting from the use of these Standard Drawings. Persons must not rely on these Standard Drawings as the equivalent of, or a substitute for, project-specific design and assessment by an appropriately qualified professional.

## Capricorn Municipal Development Guidelines

Incorporating:

Banana Shire Council (BSC)  
Central Highlands Regional Council (CHRC)  
Gladstone Regional Council (GRC)  
Isaac Regional Council (IRC)

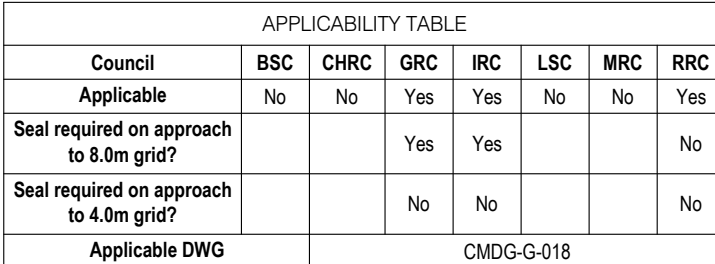
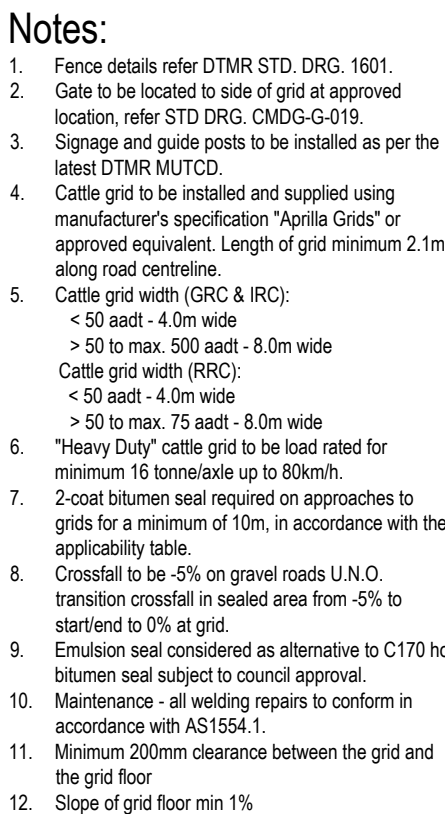
Livingstone Shire Council (LSC)  
Maranoa Regional Council (MRC)  
Rockhampton Regional Council (RRC)

6.0m GATE DETAIL

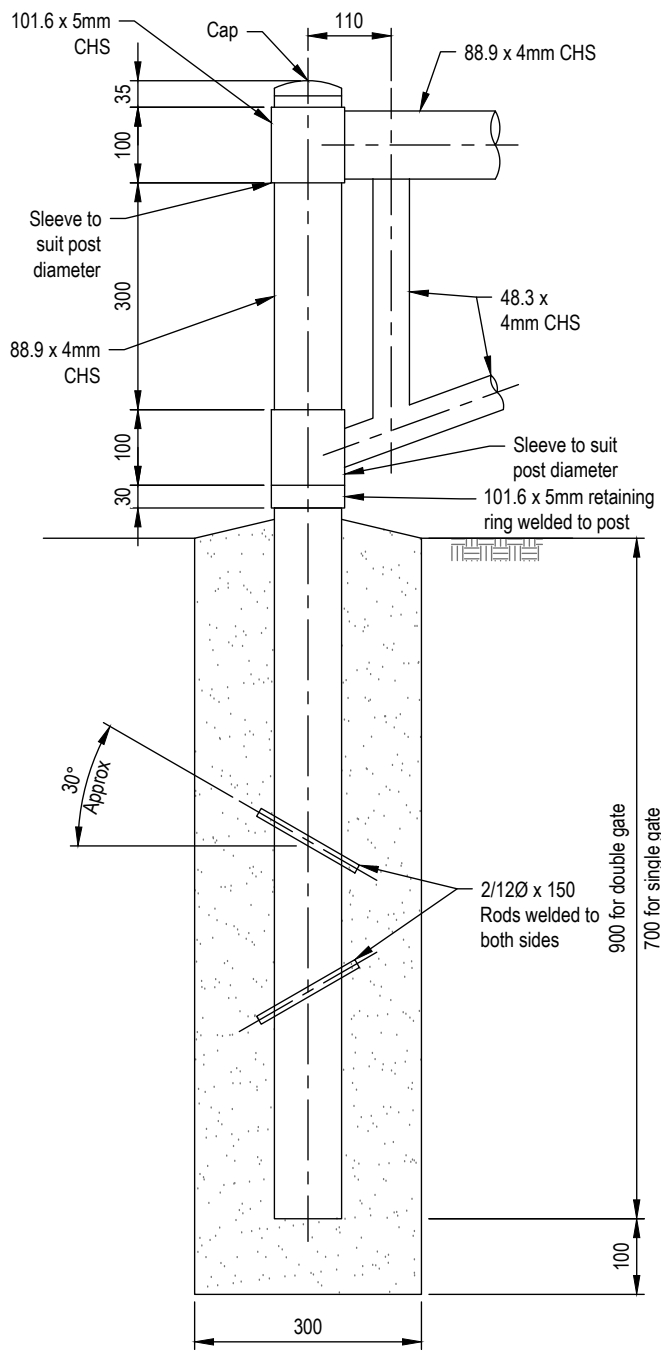
GENERAL

STANDARD  
DRAWING  
CMDG-G-019

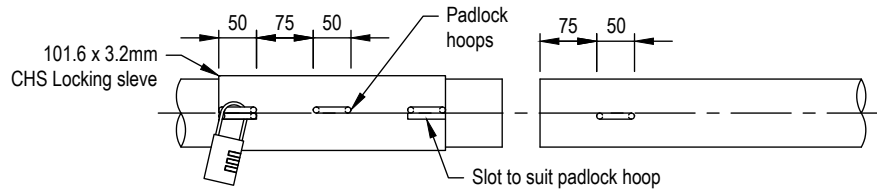
REV. A B C



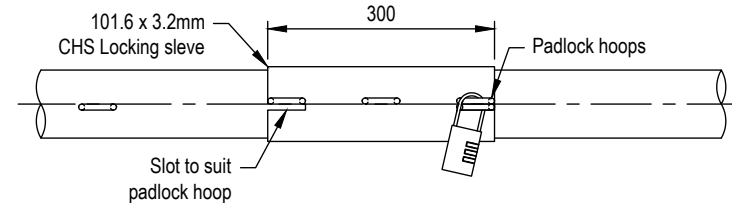
GENERAL						
STANDARD DRAWING						A3
CMDG-G-020						
REV.	B	C	D	E	F	



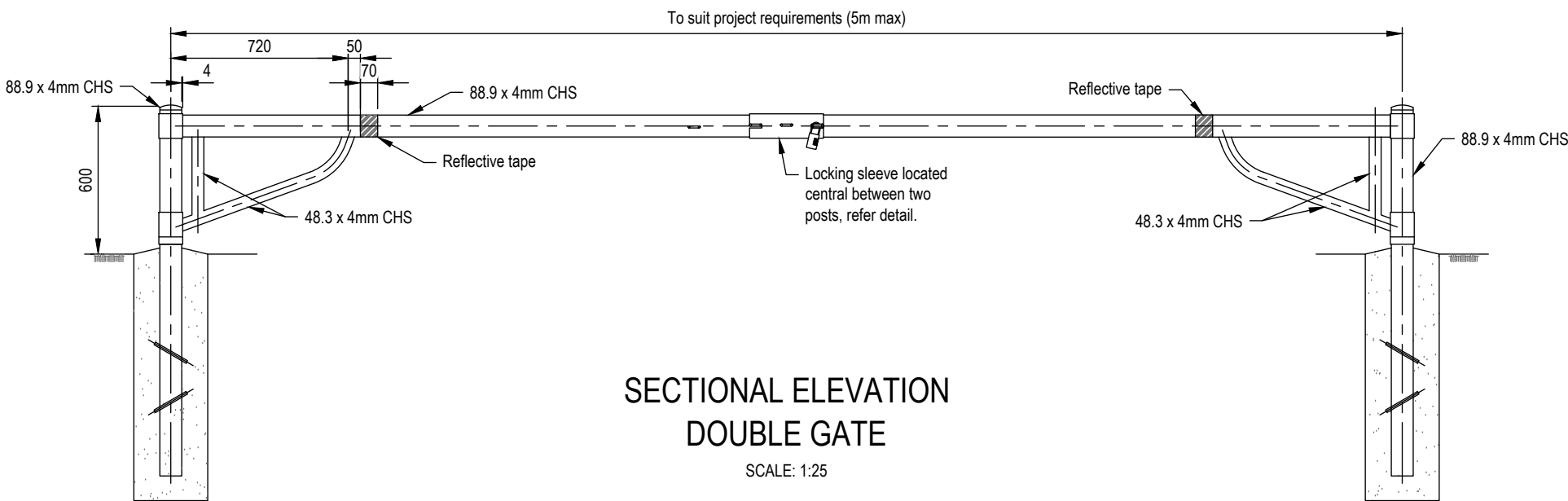
**SWING POST DETAIL**  
SCALE: 1:10



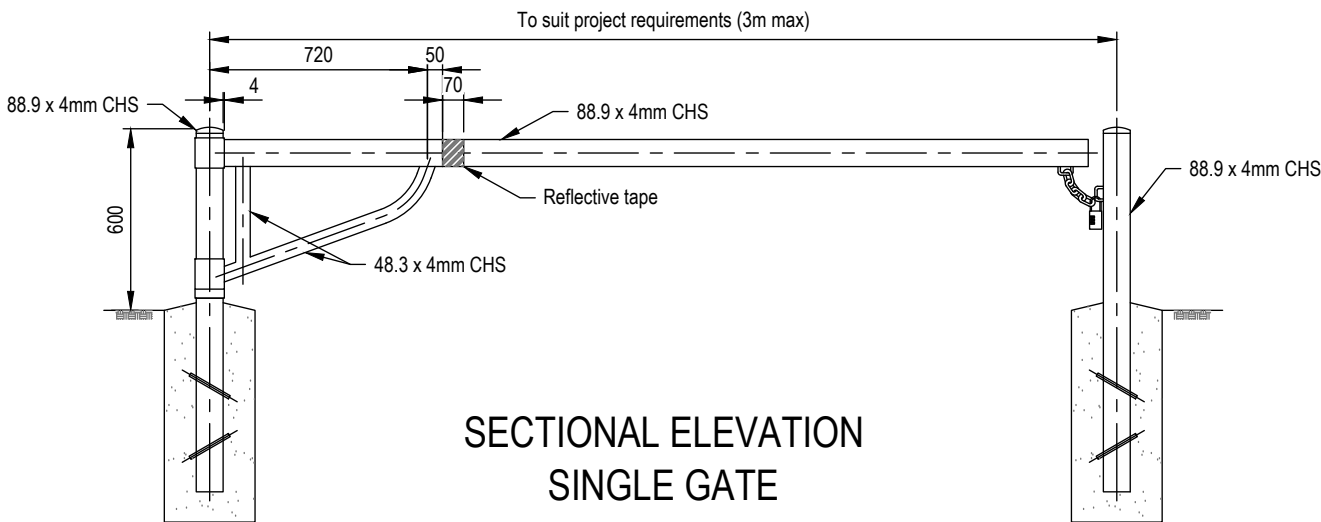
**DOUBLE GATE LOCKING SLEEVE  
(OPEN POSITION)**  
SCALE: 1:10



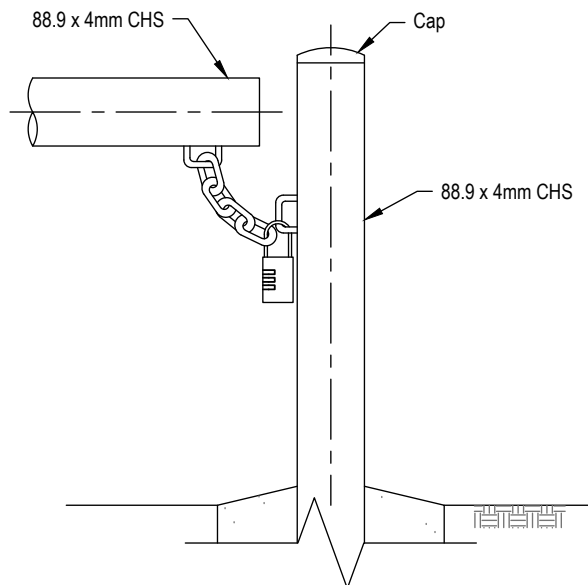
**DOUBLE GATE LOCKING SLEEVE  
(CLOSED POSITION)**  
SCALE: 1:10



**SECTIONAL ELEVATION  
DOUBLE GATE**  
SCALE: 1:25



**SECTIONAL ELEVATION  
SINGLE GATE**  
SCALE: 1:25



**SINGLE GATE POST DETAIL**  
SCALE: 1:10

- NOTES:**
1. All Concrete to be grade N25 in accordance with AS 1379 and AS3600
  2. All end and mitre joints to be butt welded all around
  3. All dimensions are in millimeters unless shown otherwise.
  4. All gate components to be hot dipped galvanised after welding (unless approved otherwise)

APPLICABILITY TABLE							
Council	BSC	CHRC	GRC	IRC	LSC	MRC	RRC
Applicable	Yes	Yes	Yes	Yes	Yes	Yes	Yes

REVISIONS	DATE
A	NEW DRAWING
	04/2023

**DISCLAIMER.**  
The authors and sponsoring organisations shall have no liability or responsibility to the user or any other person or entity with respect to any liability, loss or damage caused or alleged to be caused, directly or indirectly, by the adoption and use of these Standard Drawings including, but not limited to, any interruption of service, loss of business or anticipatory profits, of consequential damages resulting from the use of these Standard Drawings. Persons must not rely on these Standard Drawings as the equivalent of, or a substitute for, project-specific design and assessment by an appropriately qualified professional.

**Capricorn Municipal Development Guidelines**  
Incorporating:  
Banana Shire Council (BSC)  
Central Highlands Regional Council (CHRC)  
Gladstone Regional Council (GRC)  
Livingstone Shire Council (LSC)

Maranoa Regional Council (MRC)  
Rockhampton Regional Council (RRC)  
Isaac Regional Council (IRC)

**ENTRANCE BARRIER  
SWING GATE**

GENERAL	
STANDARD DRAWING	A3
CMDG-G-021	
REV.	A