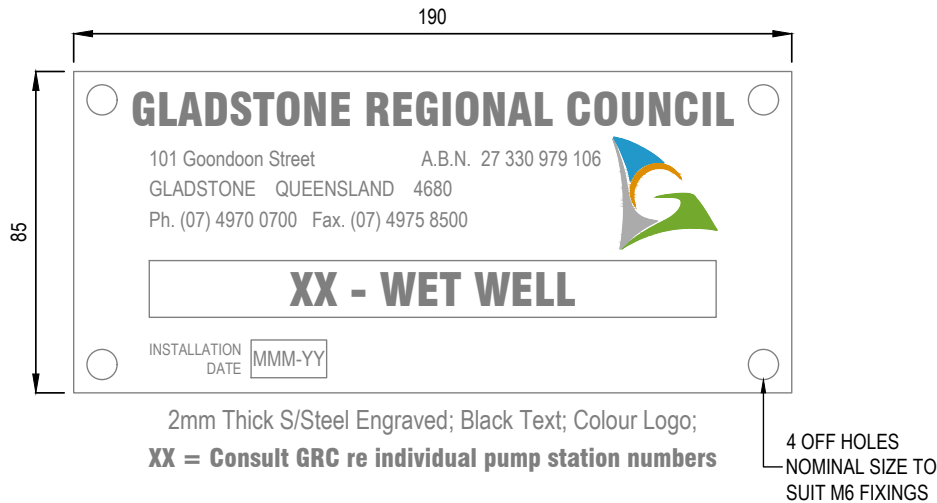


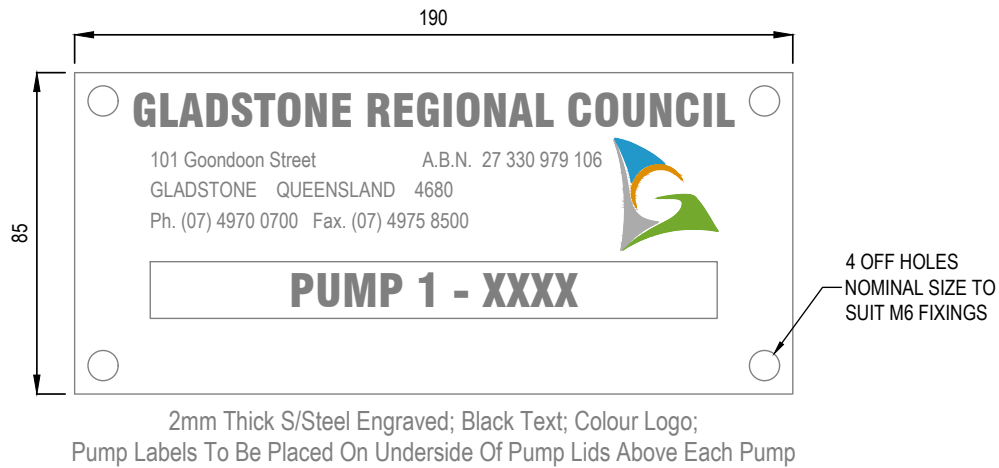
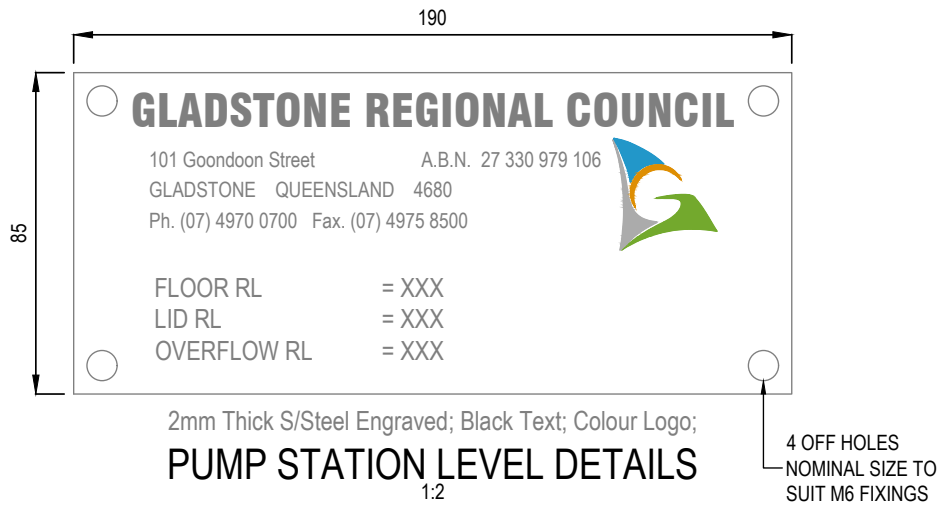
NOTES:

1. FIGURED DIMENSIONS TO BE TAKEN IN PREFERENCE TO SCALED DIMENSIONS.
2. VERIFY ALL DIMENSIONS ON THE JOB BEFORE COMMENCING WORK OR PREPARING SHOP DRAWINGS.
3. ALL SHOP DRAWINGS MUST BE APPROVED BY COUNCIL BEFORE COMMENCING WORK.
4. DRAWINGS TO BE READ IN CONJUNCTION WITH RELEVANT SPECIFICATIONS.
5. EXAMPLE LAYOUT ONLY; PROJECT SPECIFIC LAYOUT TO BE SUBMITTED FOR APPROVAL PRIOR TO COMMENCEMENT.
6. REFER GRC TAGGING AND LABELLING SPECIFICATION FOR REQUIREMENTS.



FABRICATE AND INSTALL LABELS FOR THE FOLLOWING ITEMS OF PLANT:

- XX - VALVE PIT
- XX - FLOW METER CHAMBER
- XX - PIGGING CHAMBER
- XX - COLLECTION MAN HOLE
- XX - OVERFLOW MAN HOLE
- XX - OVERFLOW TANK 1
- XX - OVERFLOW TANK 2
- XX - OVERFLOW SCREEN CHAMBER
- XX - SCOUR VALVE
- XX - RPZ DEVICE



APPLICABILITY TABLE							
Council	BSC	CHRC	GRC	IRC	LSC	MRC	RRC
Applicable	No	No	Yes	No	No	No	No
Applicable DWG							

REVISIONS		DATE	<p>DISCLAIMER.</p> <p>The authors and sponsoring organisations shall have no liability or responsibility to the user or any other person or entity with respect to any liability, loss or damage caused or alleged to be caused, directly or indirectly, by the adoption and use of these Standard Drawings including, but not limited to, any interruption of service, loss of business or anticipatory profits, of consequential damages resulting from the use of these Standard Drawings. Persons must not rely on these Standard Drawings as the equivalent of, or a substitute for, project-specific design and assessment by an appropriately qualified professional.</p>	<h3>Capricorn Municipal Development Guidelines</h3> <p>Incorporating:</p> <div><div>Banana Shire Council (BSC)</div><div>Central Highlands Regional Council (CHRC)</div><div>Gladstone Regional Council (GRC)</div><div>Livingstone Shire Council (LSC)</div></div> <div><div>Maranoa Regional Council (MRC)</div><div>Rockhampton Regional Council (RRC)</div><div>Isaac Regional Council (IRC)</div></div>		<h2>SEWERAGE PUMP STATIONS LABELS</h2>							SEWER	
						STANDARD DRAWING		A3						
						CMDG-S-055								
						REV.	A							
A	PREVIOUSLY DRAWING S-0500 REVISION B	09/2022												