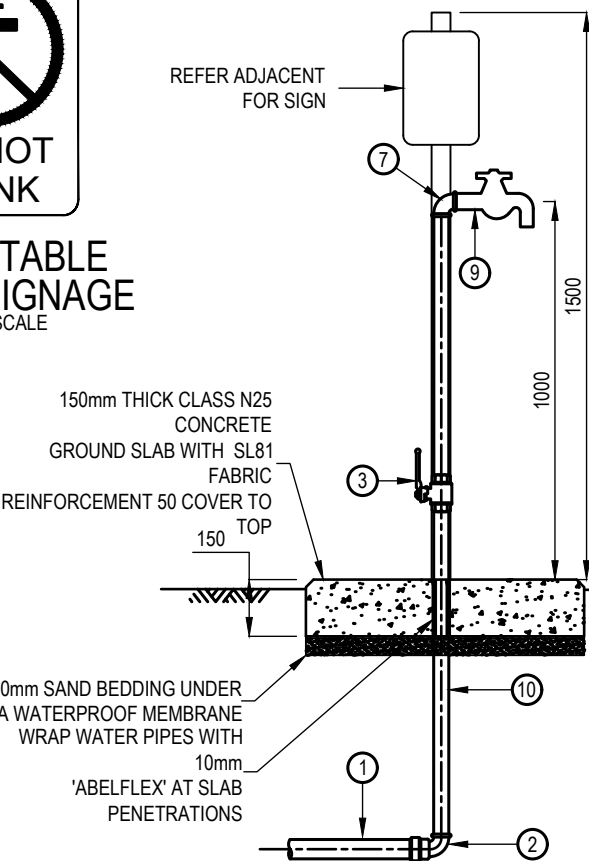


BILL OF MATERIALS

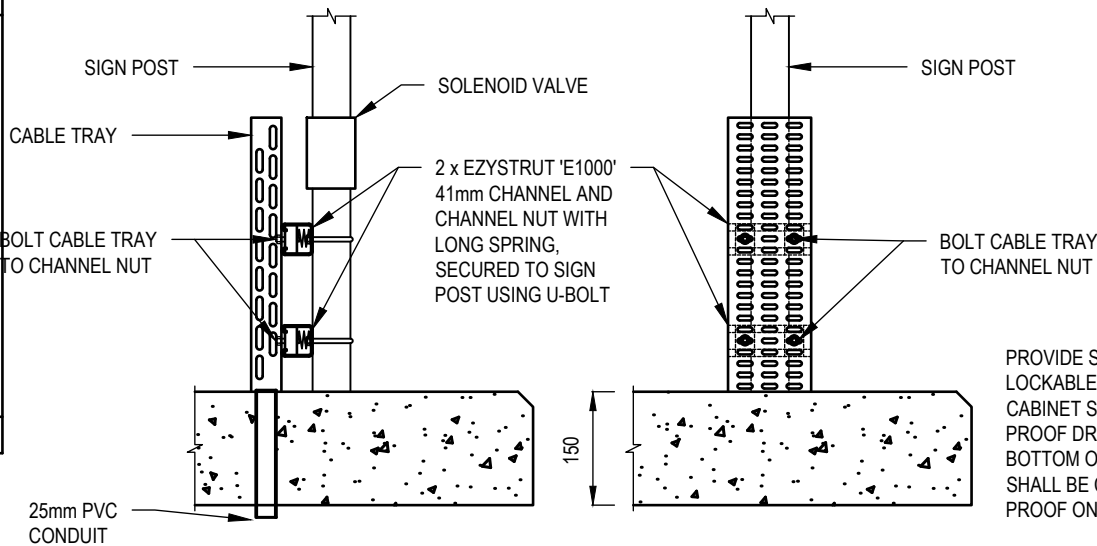
ITEM	DESCRIPTION
1	DN40 PN16 POLYETHYLENE WATER SERVICE
2	DN40 90° BEND STAINLESS STEEL WITH POLY TO STAINLESS ADAPTOR
3	DN40 STAINLESS STEEL BALL VALVE
4	DN40 TO DN25 TAPPER
5	DN25 STAINLESS STEEL STRAINER
6	DN25 STAINLESS STEEL RPZ DEVICE
7	DN25 90° BEND STAINLESS STEEL FL-FL SOCKETS
8	DN25 STAINLESS STEEL BALL VALVE
9	HOSE COCK
10	DN40 STAINLESS STEEL TUBE
11	DN25 STAINLESS STEEL BSP ADAPTOR WITH TUBE END
12	DN25 STAINLESS STEEL TUBE
13	90° CAMLOCK FITTING
14	NYLON CABLE SOCK
15	SPRINKLER SENNINGER IWOB - 26mm NOZZLE

ALL FITTINGS TO BE BLUCHER AUSTRALIA MAPRESS STAINLESS STEEL PRESSURE FITTINGS

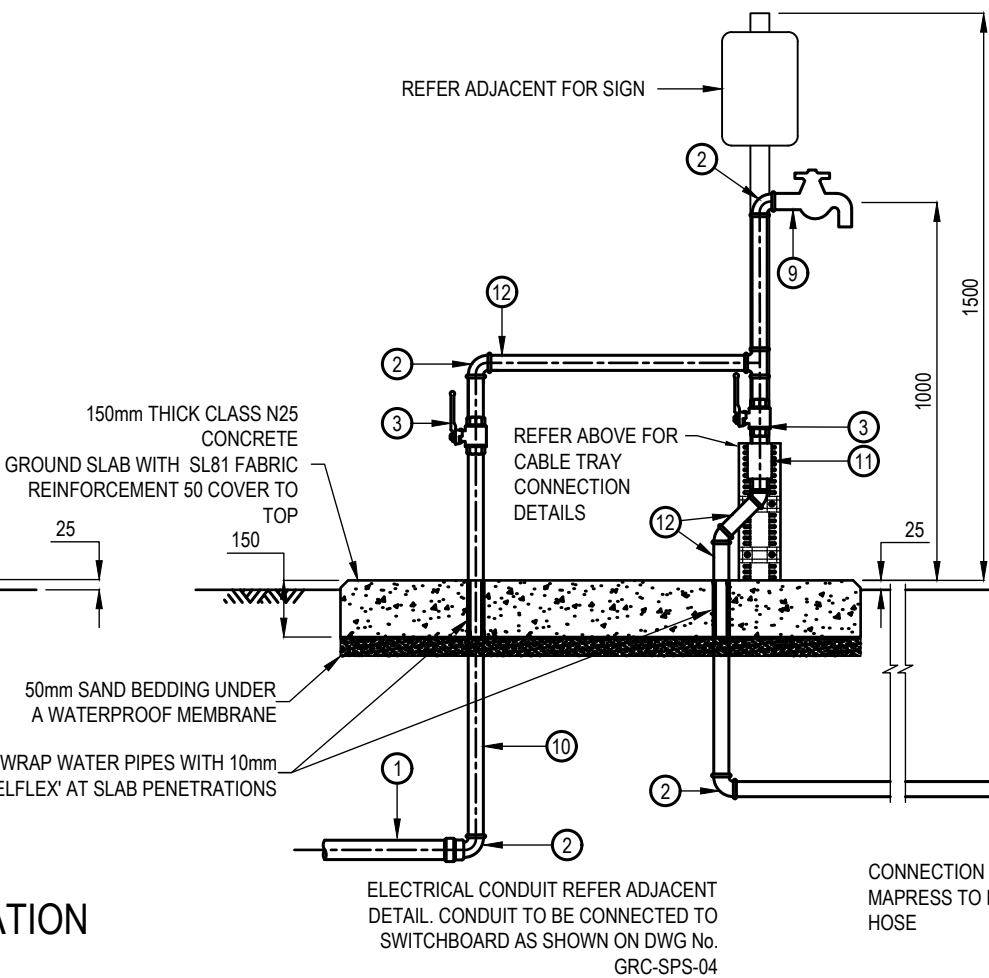
NON-POTABLE WATER NOTICE TO BE INSTALLED ABOVE HOSE COCK



GENERAL HOSE COCK INSTALLATION
VALVE PIT
1:20 U.N.O.

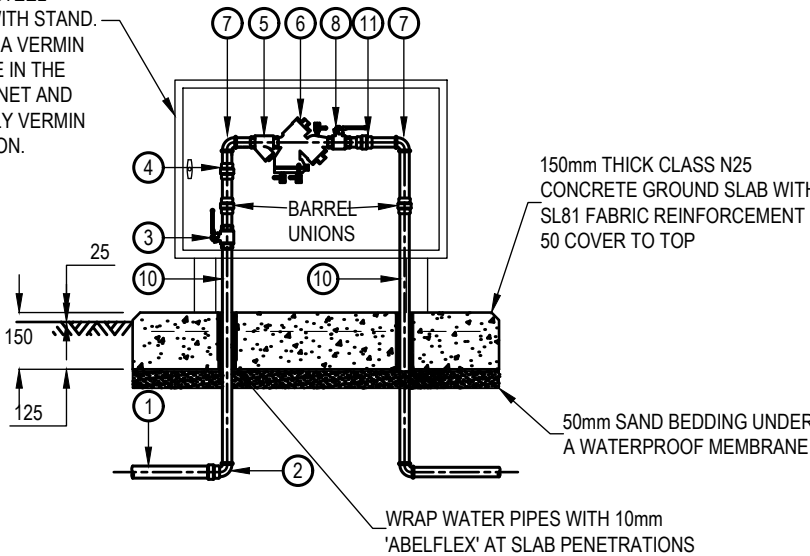


CABLE TRAY DETAIL
1:10 U.N.O.

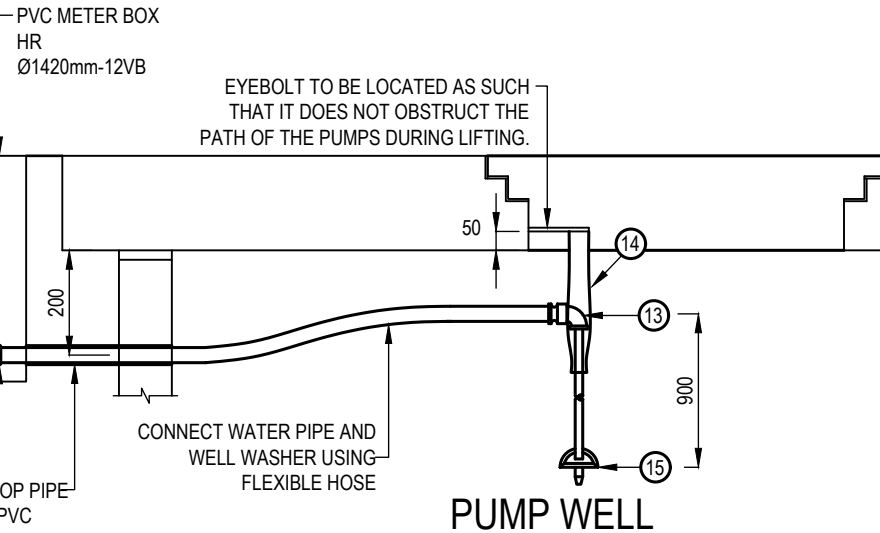


HOSE COCK AT PUMP WELL
1:20 U.N.O.

PROVIDE STAINLESS STEEL LOCKABLE CABINET WITH STAND. CABINET SHALL HAVE A VERMIN PROOF DRAIN ORIFICE IN THE BOTTOM OF THE CABINET AND SHALL BE COMPLETELY VERMIN PROOF ON COMPLETION.



RPZD BACK FLOW PREVENTION DEVICE
1:20 U.N.O.



PUMP WELL

APPLICABILITY TABLE							
Council	BSC	CHRC	GRC	IRC	LSC	MRC	RRC
Applicable	No	No	Yes	No	No	No	No
Applicable DWG							

REVISIONS	DATE
A	DETAILS ADDED. PREVIOUSLY DRAWING S-050M REV B
	09/2022

DISCLAIMER.
The authors and sponsoring organisations shall have no liability or responsibility to the user or any other person or entity with respect to any liability, loss or damage caused or alleged to be caused, directly or indirectly, by the adoption and use of these Standard Drawings including, but not limited to, any interruption of service, loss of business or anticipatory profits, of consequential damages resulting from the use of these Standard Drawings. Persons must not rely on these Standard Drawings as the equivalent of, or a substitute for, project-specific design and assessment by an appropriately qualified professional.

Capricorn Municipal Development Guidelines
Incorporating:
Banana Shire Council (BSC)
Central Highlands Regional Council (CHRC)
Gladstone Regional Council (GRC)
Livingstone Shire Council (LSC)
Maranoa Regional Council (MRC)
Rockhampton Regional Council (RRC)
Isaac Regional Council (IRC)

SEWERAGE PUMP STATIONS
BACK FLOW PREVENTION

SEWER	
STANDARD DRAWING	A3
CMDG-S-053	
REV.	A