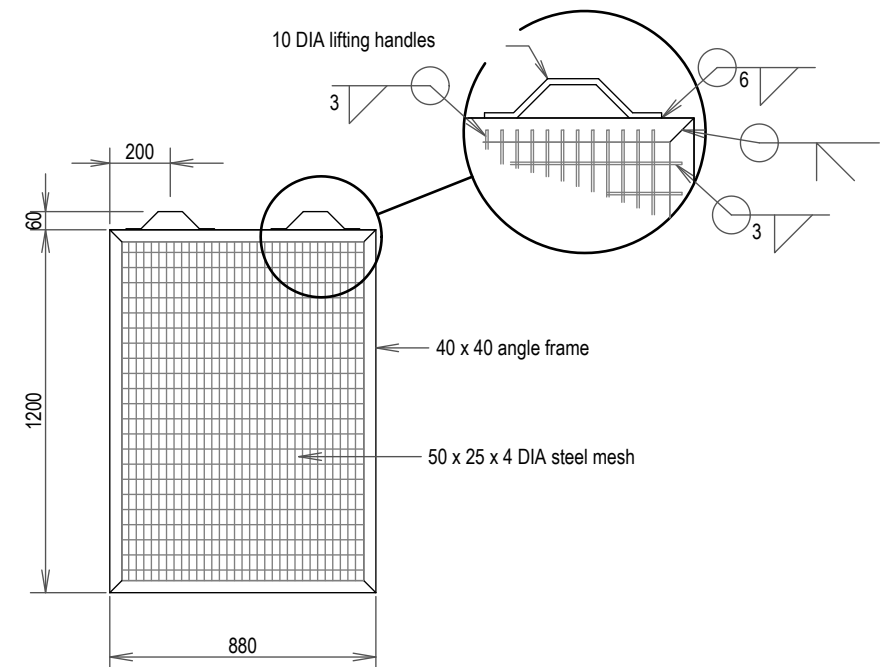


OUTLET

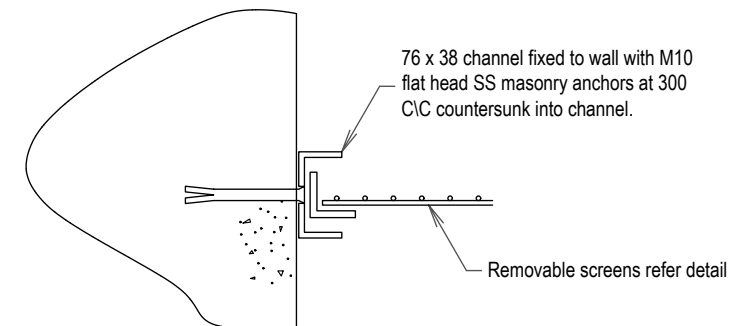
OVERFLOW CHAMBER
PLAN

VALVE

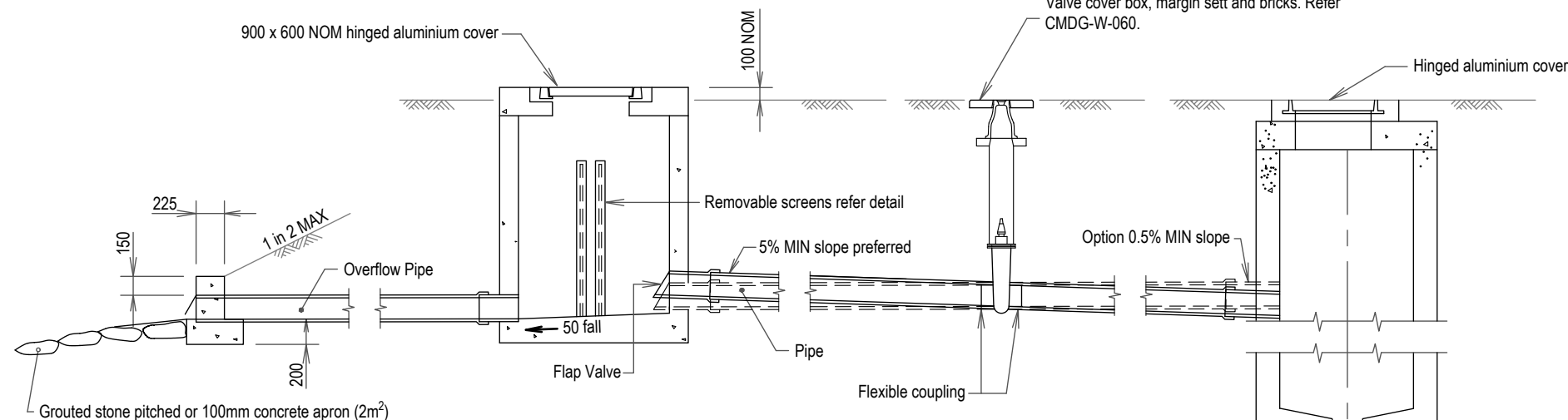
RECEIVING ACCESS CHAMBER



SCREEN DETAIL



SCREEN GUIDE RAIL



OUTLET

OVERFLOW CHAMBER

VALVE

RECIEVING ACCESS CHAMBER

NOTES:

1. Pipes shown are diagrammatic only, refer project drawings for layout and levels.
2. Concrete N32 in accordance with AS 1379 and AS 3600.
3. All steelwork hot dip galvanized to AS/NZS 4680 after fabrication.
4. All bars and angles Grade 250 to AS 3679.
5. All bolts, nuts and washers shall be Grade AS/NZS 1252.316 stainless steel with approved anti-galling compound.
6. All welds to AS 1554. All welding symbols comply with AS 1101.3.
7. The covers shall be gas tight similar to those produced by Halco Engineering. All components of access covers and frames shall be fabricated from aluminium alloy 6061-T6, to AS 2848. All embedded surfaces shall be painted with two coats of alkali resistant bituminous paint. The covers shall be designed as a platform in accordance with AS 1657. Fabrication details shall be submitted to the Superintendent for approval prior to manufacture.
8. If covers are subject to vehicular loading, use appropriately rated C.I. covers.
9. All dimensions in millimetres.

SECTIONAL ELEVATION

APPLICABILITY TABLE							
Council	BSC	CHRC	GRC	IRC	LSC	MRC	RRC
Applicable	Yes	Yes	Yes	Yes	Yes	Yes	Yes

REVISIONS	DATE
A	PREVIOUSLY DRAWING S-058 REVISION F
	09/2022

DISCLAIMER.
The authors and sponsoring organisations shall have no liability or responsibility to the user or any other person or entity with respect to any liability, loss or damage caused or alleged to be caused, directly or indirectly, by the adoption and use of these Standard Drawings including, but not limited to, any interruption of service, loss of business or anticipatory profits, of consequential damages resulting from the use of these Standard Drawings. Persons must not rely on these Standard Drawings as the equivalent of, or a substitute for, project-specific design and assessment by an appropriately qualified professional.

Capricorn Municipal Development Guidelines
Incorporating:
Banana Shire Council (BSC)
Central Highlands Regional Council (CHRC)
Gladstone Regional Council (GRC)
Livingstone Shire Council (LSC)
Maranoa Regional Council (MRC)
Rockhampton Regional Council (RRC)
Isaac Regional Council (IRC)

PUMP STATION OVERFLOW
CMDG-S-037
REV. A

SEWER
STANDARD DRAWING
A3