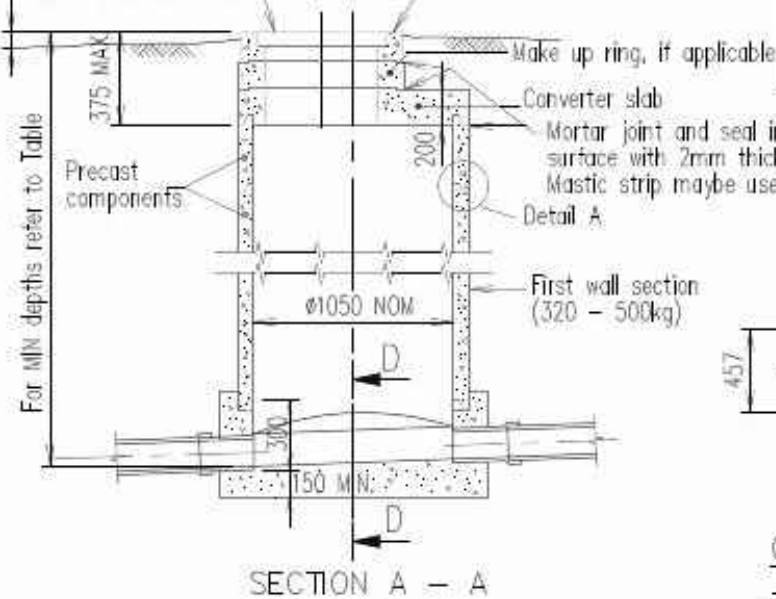


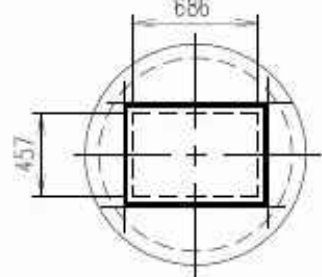
Class D Cast Iron lid and frame  
610mm clear opening.

0mm Road  
30mm Footpath  
75mm In allotments

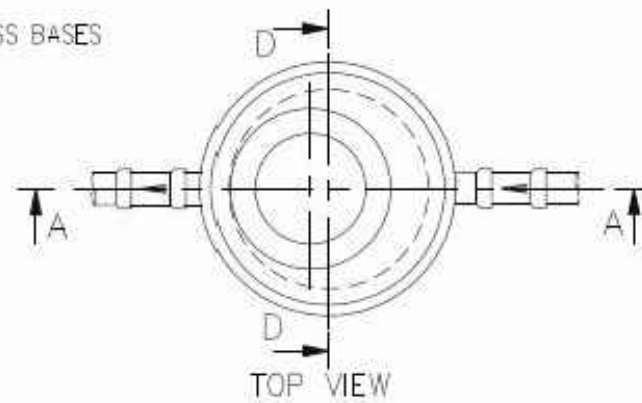


ANGLES AVAILABLE IN FIBREGLASS BASES

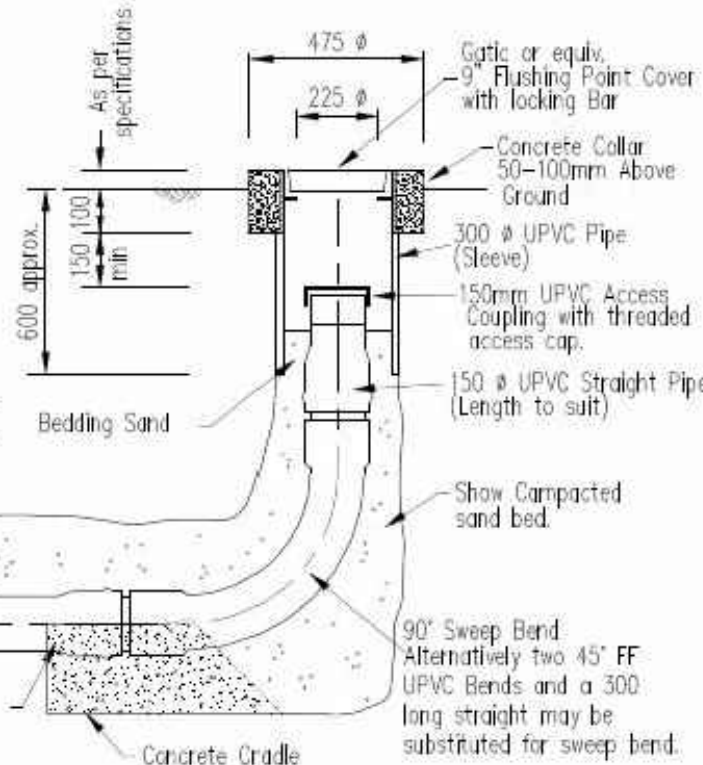
Angle	Drop thru Chamber
90-112°	40mm
112-125°	40mm
125-140°	40mm
140-150°	20mm
150-170°	(Y Pattern) 20mm
Straight	20mm



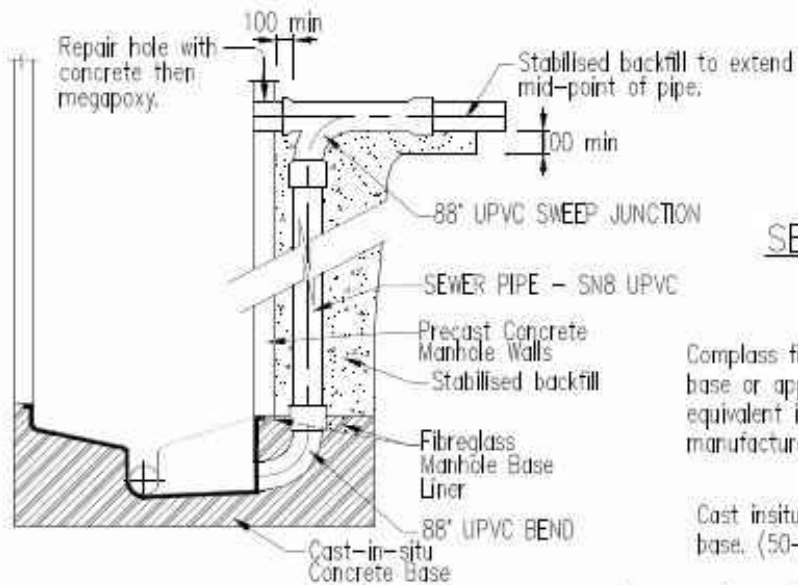
CONVERTER SLAB  
- SQUARE COVER



TOP VIEW



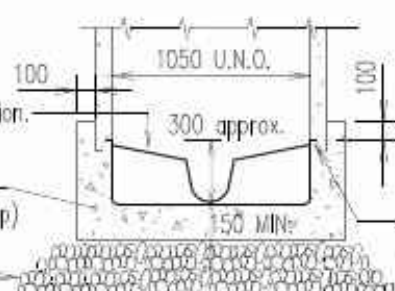
SECTIONAL ELEVATION - TERMINAL MAINTENANCE SHAFT



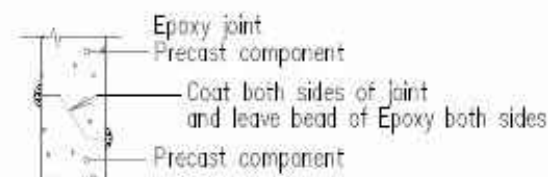
EXTERNAL DROP DETAIL  
Gladstone City Council only.

Compass fibreglass base or approved equivalent installed to manufactures specification.

Cast insitu concrete base. (50-70mm slump)  
Compacted gravel base MIN. 100mm thick unless noted otherwise in project documents.



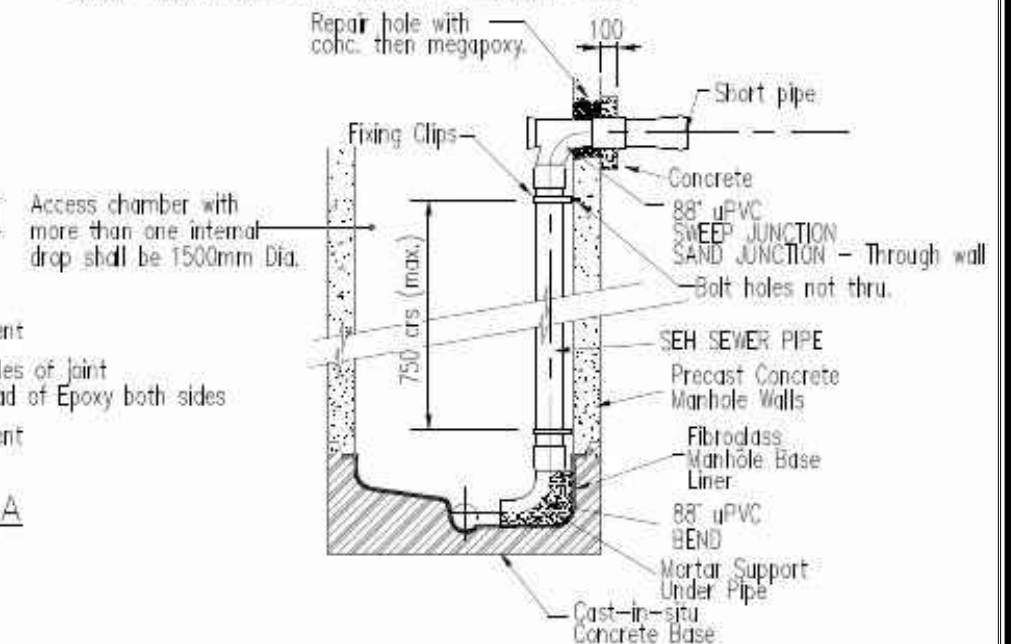
PART SECTION D - D  
FIBREGLASS BASE



DETAIL A

NOTES

- Concrete shall be
  - Class N32 for in-situ concrete
  - Class N40 for pre-cast segments
 both in accordance with AS 1379 and AS 3600.
- All fasteners shall be Grade A283/316 stainless steel. Unless otherwise noted, fasteners shall be as described below.
  - Fixing to concrete - bolts shall be approved anchors.
  - Fixing to metalwork - bolts shall be HEX head bolts.
- Nylon or polythene separation inserts shall be used between stainless steel fasteners and aluminium sections.
- Anti-galling lubricant "Lactite 222 or 567" or similar shall be used on all threads and between all stainless steel abutting surfaces.
- Aluminium surfaces in contact with concrete shall be painted with two coats of alkali resistant bituminous paint.
- uPVC or GRP pipes cast into walls shall be coated or sanded for the length of wall penetration to ensure bonding.
- Precast chambers shall not be used where :-
  - sewer lines accept pumped flows
  - sewer lines are greater than Ø375
  - chambers are greater than 6.0m in depth
- One 6mm hole will be allowed to be drilled into a bench to vent base and witness concrete slurry. "Drummy" benches may need to be filled with sand/cement slurry mixture. All holes in base to be sealed with megapoxy or equivalent.
- Alternative converter slab designed to Austroads W7 wheel load, dynamic factor 0.4. Precast converter slabs must be designed to same standards.
- All precast concrete components shall be manufactured by a manufacturer with an accredited quality assurance program from Standards Australia under AS 3902 - 1987/ ISO 9002 - 1987.
- All dimensions in millimetres.
- All sewer pipe to be Class SN8 UPVC
- Fixing clips to be Grade 316 Stainless Steel. Brackets would be required either side of all bends at 750mm MAX. spacings. Brackets to be at least 25mm wide x 2mm thick. Bracket fixing bolts to be Grade 316 Stainless Steel.



INTERNAL DROP DETAIL  
Calliope Shire Council only.

APPLICABILITY TABLE

Council	BSC	CHRC	GRC	IRC	LSC	MRC	RRC
Applicable	No	No	Yes	No	No	No	No

REVISIONS	DATE
B	12/2016
A	03/2015

DISCLAIMER.  
The authors and sponsoring organisations shall have no liability or responsibility to the user or any other person or entity with respect to any liability, loss or damage caused or alleged to be caused, directly or indirectly, by the adoption and use of these Standard Drawings including, but not limited to, any interruption of service, loss of business or anticipatory profits, of consequential damages resulting from the use of these Standard Drawings. Persons must not rely on these Standard Drawings as the equivalent of, or a substitute for, project-specific design and assessment by an appropriately qualified professional.

Capricorn Municipal Development Guidelines

Incorporating:  
Banana Shire Council (BSC) Livingstone Shire Council (LSC)  
Central Highlands Regional Council (CHRC) Maranoa Regional Council (MRC)  
Gladstone Regional Council (GRC) Rockhampton Regional Council (RRC)  
Isaac Regional Council (IRC)

ACCESS CHAMBERS  
1050mm NOM. DIA.  
PRECAST COMPONENTS

ROADS  
STANDARD  
DRAWING  
CMDG-S-021A  
REV. A B

AMENDED IMAEQ DWG S-0021