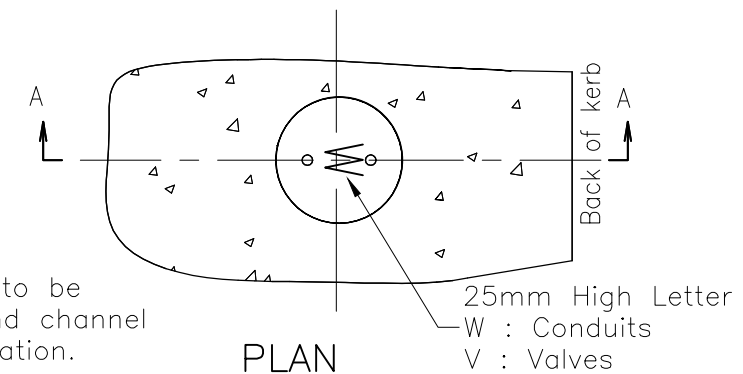
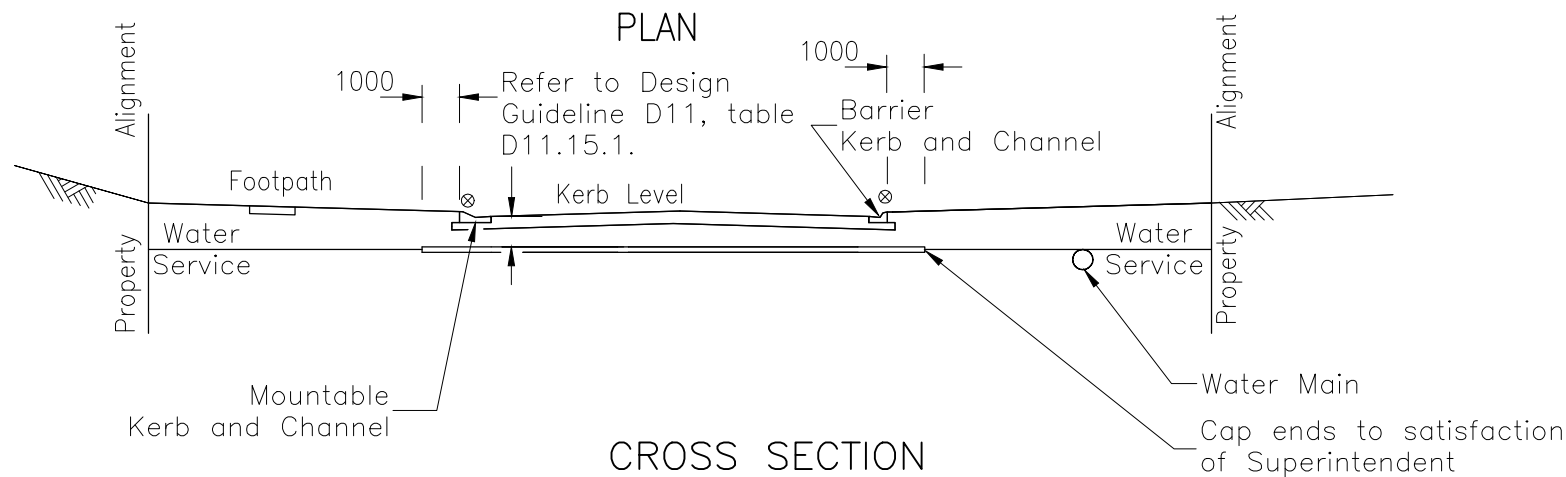


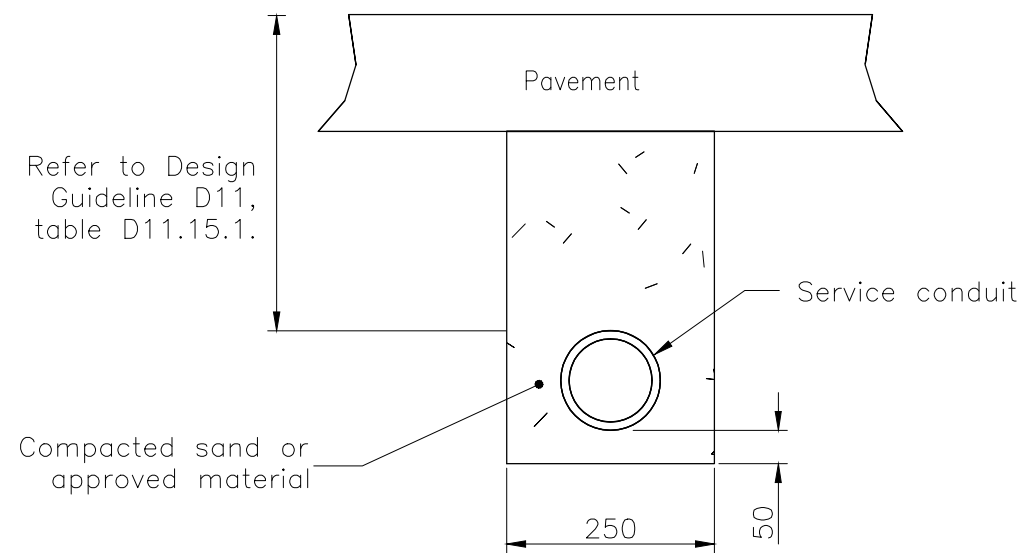
SECTION A-A MOUNTABLE OR SEMI-MOUNTABLE KERB

SECTION A-A BARRIER KERB



Markers for valves to be installed in kerb and channel at 90° to valve location.

SERVICE CONDUIT MARKER



NOTES:

1. Trimming and compaction of the subgrade to be completed and approved before excavation for service conduits is commenced. Excavated material shall be thrown on the footpath and not on the subgrade.
2. Service conduits alternatives: 100 DIA concrete/FR pipes (S.F.) Class C or S (R.R.J.)  
100 DIA uPVC, Class 12.
3. Positions of the service conduits shown are typical only. Conduits to be located as shown on project drawings.
4. Service conduit markers are to be fabricated from either brass or stainless steel and shall be installed for all conduits and valves.
5. Marker details may be varied if approved.
6. All dimensions in millimetres.

LEGEND:

- \* NOM kerb line
- ⊗ Service conduit marker
- Refer project drawings.
- Service conduit to be square to pavement and on alignment with side boundary
- SC — Service conduits (on project drawings).

APPLICABILITY TABLE

Council	BSC	CHRC	GRC	IRC	LSC	MRC	RRC
Applicable	Yes	Yes	Yes	Yes	Yes	Yes	Yes

REVISIONS	DATE
D IRC ADDED	12/2016
C GRC AND LSC ADDED	09/2014
B MRC ADDED	04/2011
A POST AMALGAMATION REVIEW	01/2010

**DISCLAIMER.**  
The authors and sponsoring organisations shall have no liability or responsibility to the user or any other person or entity with respect to any liability, loss or damage caused or alleged to be caused, directly or indirectly, by the adoption and use of these Standard Drawings including, but not limited to, any interruption of service, loss of business or anticipatory profits, of consequential damages resulting from the use of these Standard Drawings. Persons must not rely on these Standard Drawings as the equivalent of, or a substitute for, project-specific design and assessment by an appropriately qualified professional.

**Capricorn Municipal Development Guidelines**

Incorporating:  
Banana Shire Council (BSC) Livingstone Shire Council (LSC)  
Central Highlands Regional Council (CHRC) Maranoa Regional Council (MRC)  
Gladstone Regional Council (GRC) Rockhampton Regional Council (RRC)  
Isaac Regional Council (IRC)

**WATER SERVICE CONDUITS**

ROADS				
STANDARD DRAWING				
CMDG-R-070				
REV.	A	B	C	D