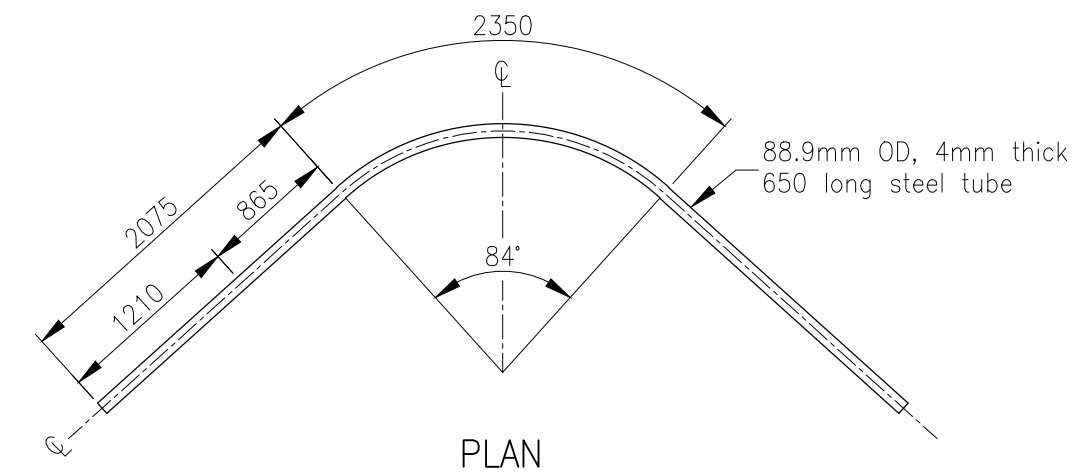
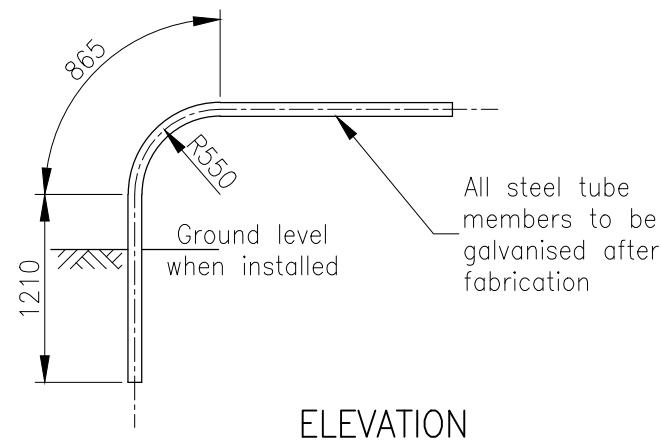


PLAN
ENTRANCE DETAIL



BENDING DETAIL

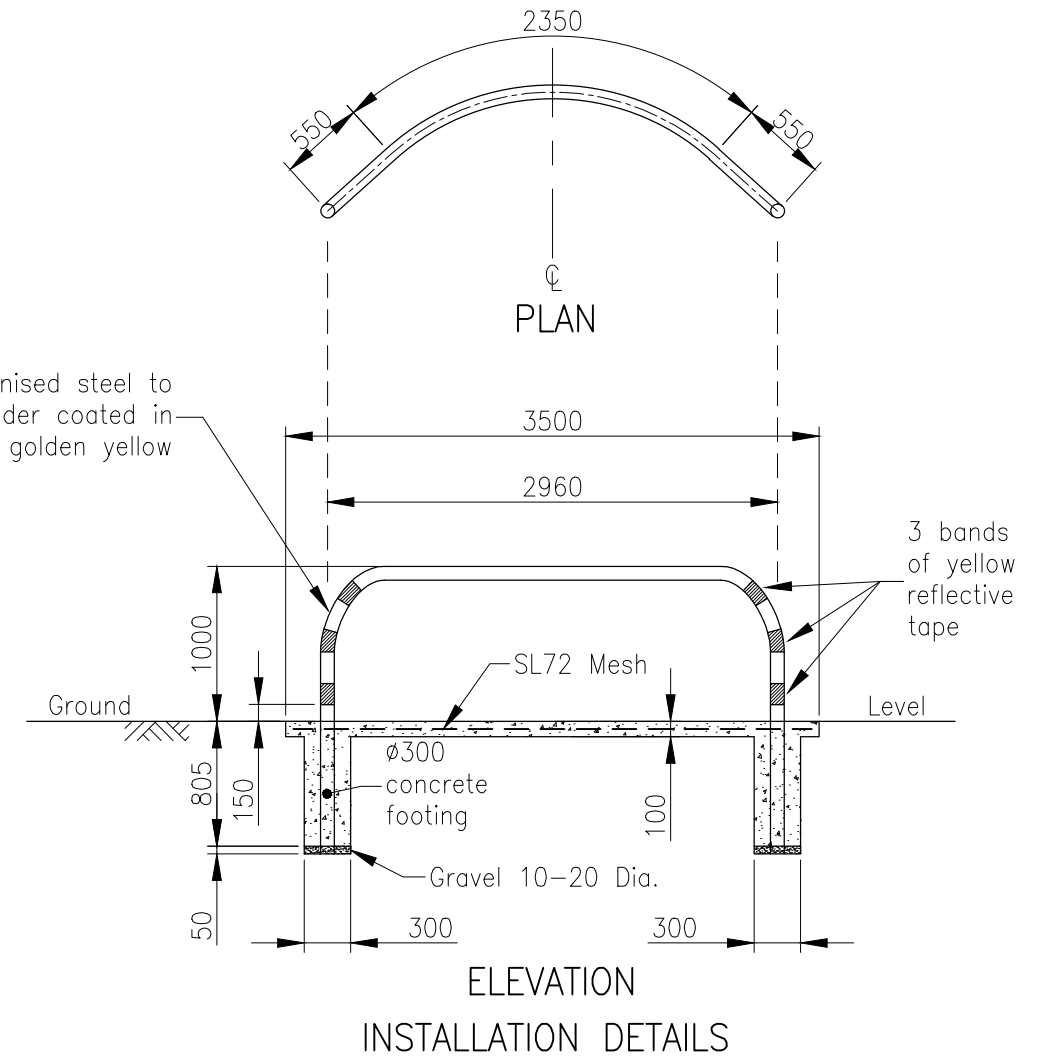


ELEVATION

NOTE:
Roadside this side

NOTES:

1. Concrete N32 in accordance with AS 1379 and AS 3600.
2. Galvanized steel tube to be in accordance with AS 1163.
3. Each unit to be made from a one piece 6.5m long tube by roll forming only.
4. Retroreflective tape to AS/NZS 1906.1. Apply in accordance with manufacturer's recommendations.
5. All dimensions in millimetres.



ELEVATION
INSTALLATION DETAILS

APPLICABILITY TABLE

Council	BSC	CHRC	GRC	IRC	LSC	MRC	RRC
Applicable	Yes	Yes	Yes	Yes	Yes	Yes	Yes

REVISIONS	DATE
D IRC ADDED	12/2016
C GRC AND LSC ADDED	09/2014
B MRC ADDED	04/2011
A POST AMALGAMATION REVIEW	01/2010

DISCLAIMER.
The authors and sponsoring organisations shall have no liability or responsibility to the user or any other person or entity with respect to any liability, loss or damage caused or alleged to be caused, directly or indirectly, by the adoption and use of these Standard Drawings including, but not limited to, any interruption of service, loss of business or anticipatory profits, of consequential damages resulting from the use of these Standard Drawings. Persons must not rely on these Standard Drawings as the equivalent of, or a substitute for, project-specific design and assessment by an appropriately qualified professional.

Capricorn Municipal Development Guidelines
Incorporating:
Banana Shire Council (BSC) Livingstone Shire Council (LSC)
Central Highlands Regional Council (CHRC) Maranoa Regional Council (MRC)
Gladstone Regional Council (GRC) Rockhampton Regional Council (RRC)
Isaac Regional Council (IRC)

BIKEPATH
ENTRANCE TO ROAD RESERVE

ROADS
STANDARD DRAWING
CMDG-R-053
REV. A B C D