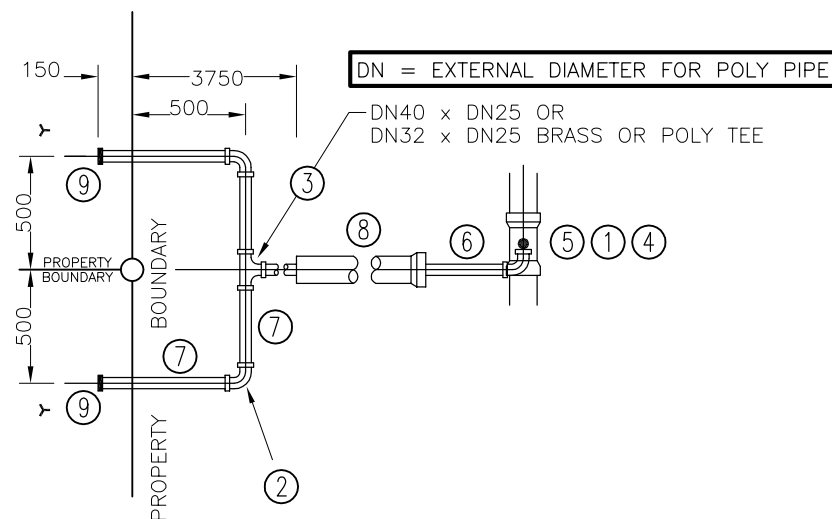


REFER TO SD-W-093 FOR STANDARD WATER METER ARRANGMENT, INSTALLED BY COUNCIL

SECTION



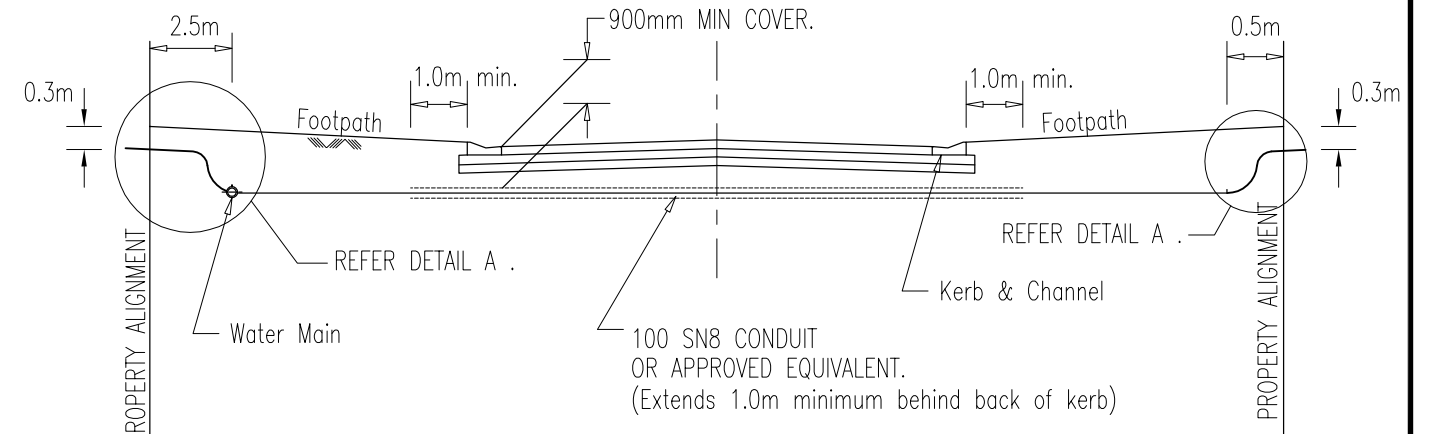
PLAN

WATER SERVICE CONNECTION DETAIL A

MARK NO	DESCRIPTION
1	Ball Cock
2	90 Poly Bend
3	Nominal OD Poly Tee (or equivalent)
4	F.I. Poly Connector
5	Tapping Band
6	OD Poly – DN 32 Short Service/DN 40 Long Service
7	Nominal OD Poly – DN 25
8	100dia. SN8 Conduit
9	Poly End Cap

NOTES :

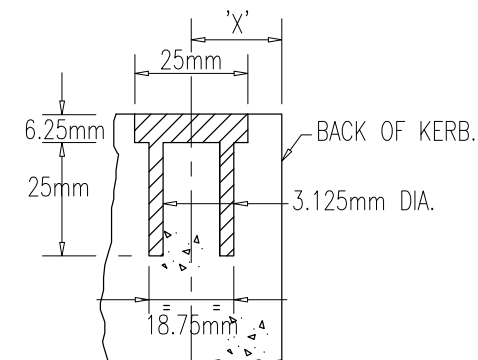
1. No galvanized fittings to be used.



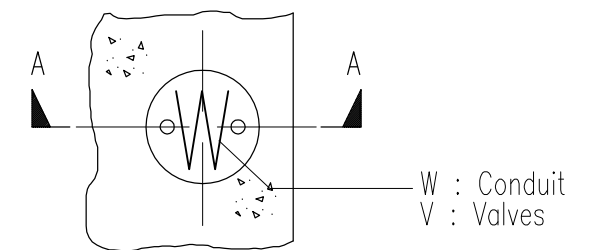
ROAD CONDUIT CROSSING

NOTES:

1. Dimension 'X' shall be 75mm for BARRIER KERB and 25mm for MOUNTABLE KERB.
2. This Drawing shall be read in conjunction with the relevant specification for Service Conduits.
3. A BRASS or STAINLESS STEEL Service Conduit Marker is to be installed for all Conduits. Refer Detail.
4. Markers for Valves to be installed in kerb and channel at 90° to Valve location.

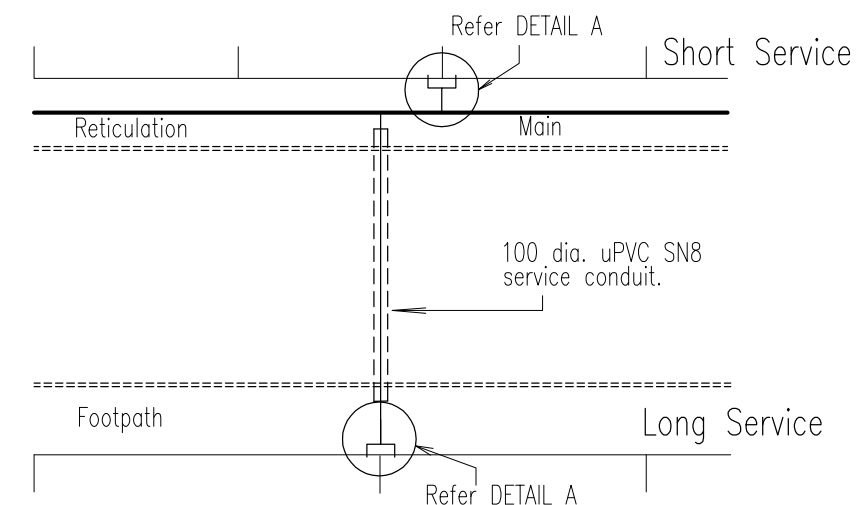


SECTION A-A



PLAN

BRASS or STAINLESS STEEL SERVICE CONDUIT MARKER and VALVE MARKER DISC



TYPICAL WATER MAIN CONNECTIONS

N.T.S

REVISIONS	APPROVED	RPEQ	DATE
B	LSC ALTERATIONS	D.T.	5424 8/3/06
A	ORIGINAL ISSUE		

DISCLAIMER.
The authors and sponsoring organisations shall have no liability or responsibility to the user or any other person or entity with respect to any liability, loss or damage caused or alleged to be caused, directly or indirectly, by the adoption and use of these Standard Drawings including, but not limited to, any interruption of service, loss of business or anticipatory profits, of consequential damages resulting from the use of these Standard Drawings. Persons must not rely on these Standard Drawings as the equivalent of, or a substitute for, project-specific design and assessment by an appropriately qualified professional.

Capricorn Municipal Development Guidelines

Incorporating: Rockhampton City Council
Livingstone Shire Council
Fitzroy Shire Council
Mount Morgan Shire Council

20 & 25mm WATER SERVICE CONNECTIONS

Livingstone Shire Council

STANDARD
STANDARD DRAWING SD-W-092-LSC
REV. A B C D E