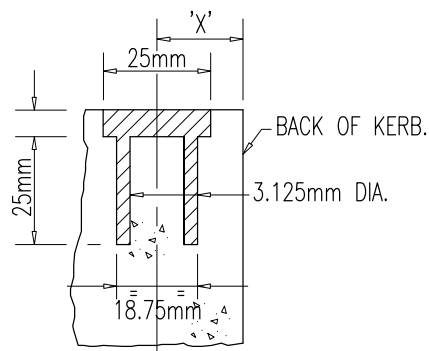
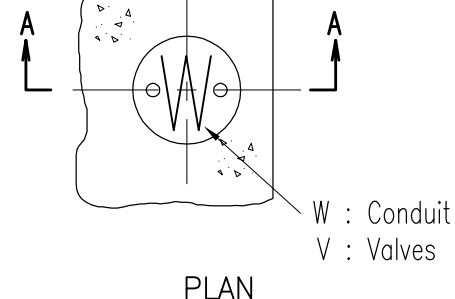


NOTES:

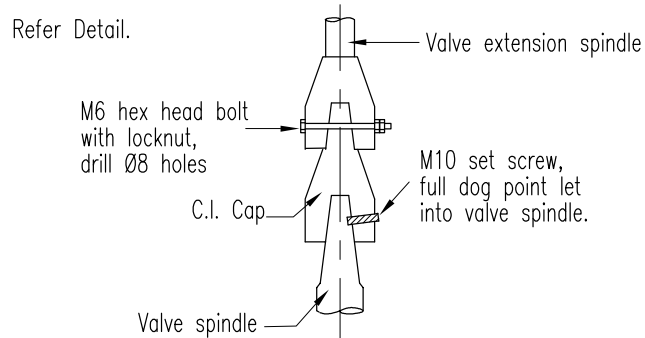
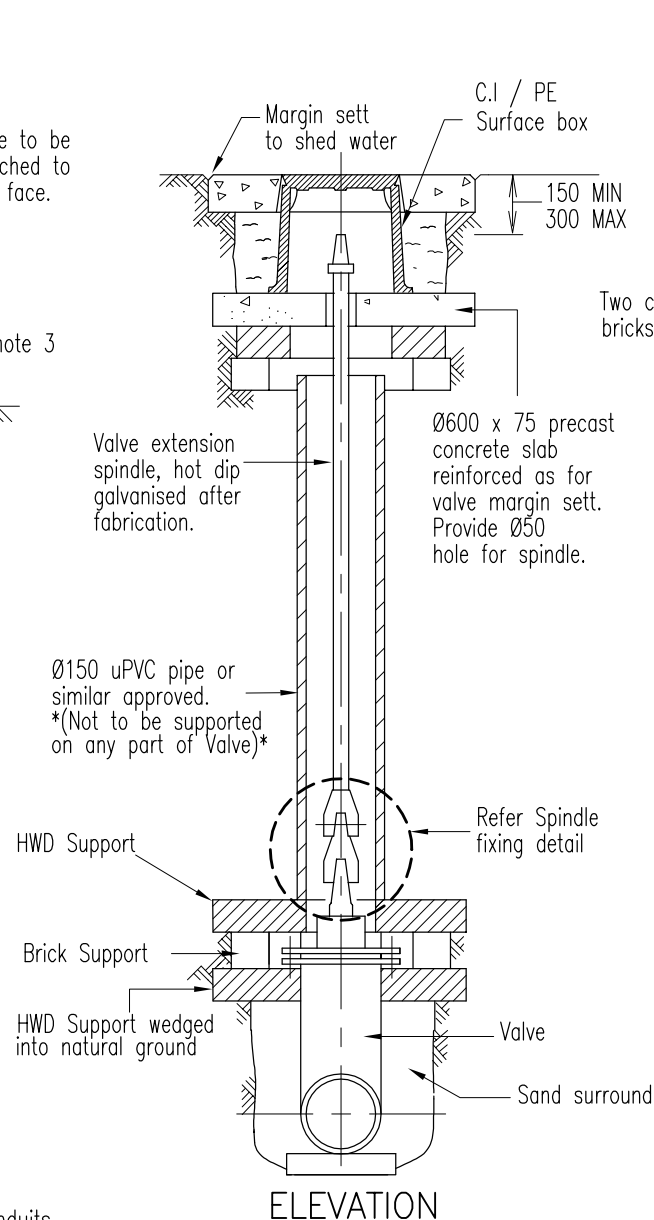
1. Dimension 'X' shall be 75mm for BARRIER KERB and 25mm for MOUNTABLE KERB.
2. This Drawing shall be read in conjunction with the relevant specification for Service Conduits.
3. A BRASS or STAINLESS STEEL Service Conduit Marker is to be installed for all Conduits. Refer Detail.
4. Markers for Valves to be installed in kerb and channel at 90° to Valve location.



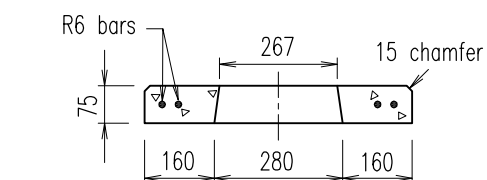
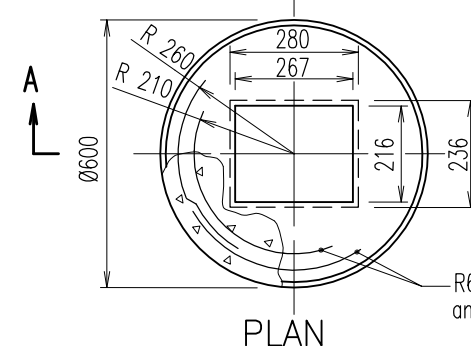
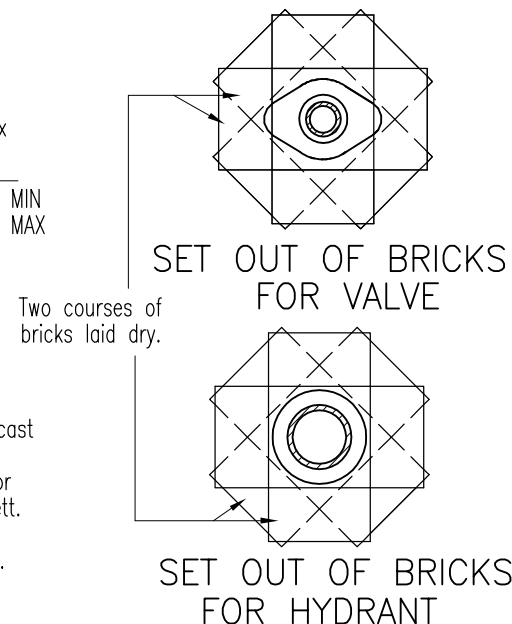
SECTION A-A



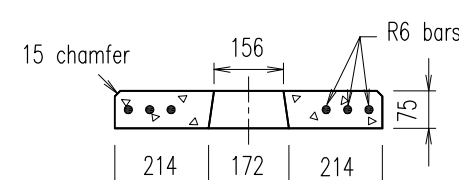
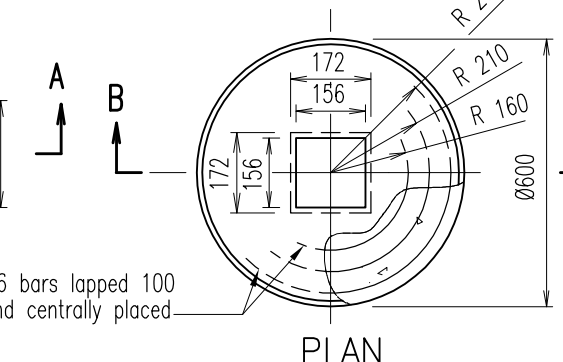
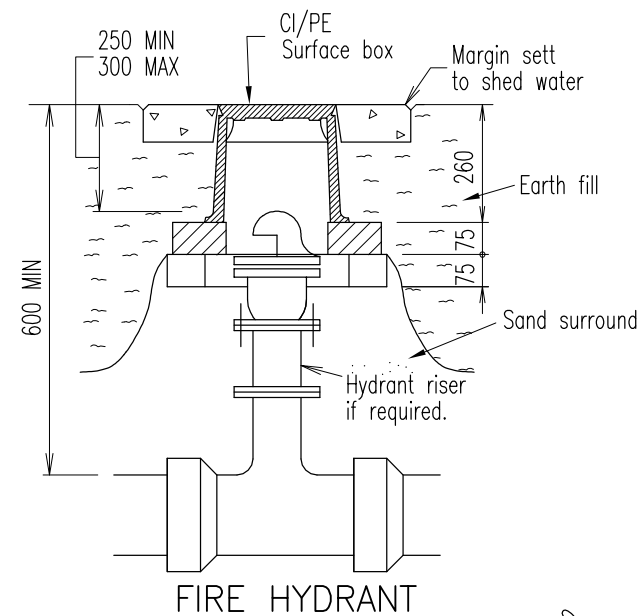
BRASS or STAINLESS STEEL SERVICE CONDUIT MARKER and VALVE MARKER DISC



SPINDLE FIXING DETAIL
UNDERGROUND
VALVE EXTENSION SPINDLE



MARGIN SETT FOR HYDRANT



MARGIN SETT FOR VALVE

NOTES

1. Where no kerb and channel exist Marker plate to be fastened to fence, pole or stake. Brass or Stainless Steel mortar discs to be adhered to kerb face, adjacent to valve, air valve or scour valve.
2. Marking of fire hydrants adjacent to roads (where kerb and channel exist) to use PRPM refer Standard drawing SD-W-062.
3. Marker plate letters and figures painted in black enamel on white enamel background except for Fire Hydrant markers, where a reflective yellow background, Class 1, shall be used.
4. For Sewerage installations, background for Stop, Scour and Air Valves shall be red enamel.
5. Stake to be CCA treated hardwood. Upper section of stake shall be primed, undercoated and finished with Wattyl 'Safron Yellow' or similar colour.
6. Hydrants tees and risers to be D.I.C.L.
7. Hydrants and valves to be coated with thermosetting epoxy powder to AS 3952 and AS 2638.
8. All bolts stainless steel to AS 2837/316.
9. Refer project documentation for valve/hydrant surface box type, as per Standard Drawing SD-W-0061.
10. Service Authority may require valve pits on mains Ø450 or larger.
11. All galvanizing to AS 1650.
12. Reinforcing bars Grade 400 to AS 1302.
13. All dimensions in millimetres.

REVISIONS	APPROVED	RPEQ	DATE
B LSC ALTERATIONS	D.T.	5424	24/3/06
A ORIGINAL ISSUE			

DISCLAIMER.

The authors and sponsoring organisations shall have no liability or responsibility to the user or any other person or entity with respect to any liability, loss or damage caused or alleged to be caused, directly or indirectly, by the adoption and use of these Standard Drawings including, but not limited to, any interruption of service, loss of business or anticipatory profits, of consequential damages resulting from the use of these Standard Drawings. Persons must not rely on these Standard Drawings as the equivalent of, or a substitute for, project-specific design and assessment by an appropriately qualified professional.

Capricorn Municipal Development Guidelines

Incorporating: Rockhampton City Council
Livingstone Shire Council
Fitzroy Shire Council
Mount Morgan Shire Council

HYDRANT AND VALVE INSTALLATION

Livingstone Shire Council

STANDARD
STANDARD DRAWING SD-W-060-LSC
REV. A B C D E