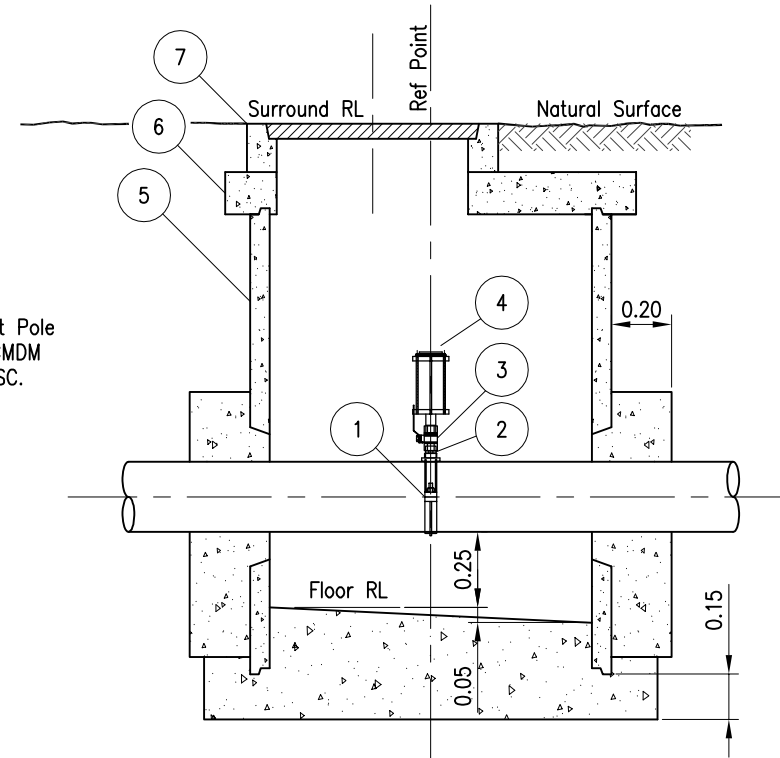
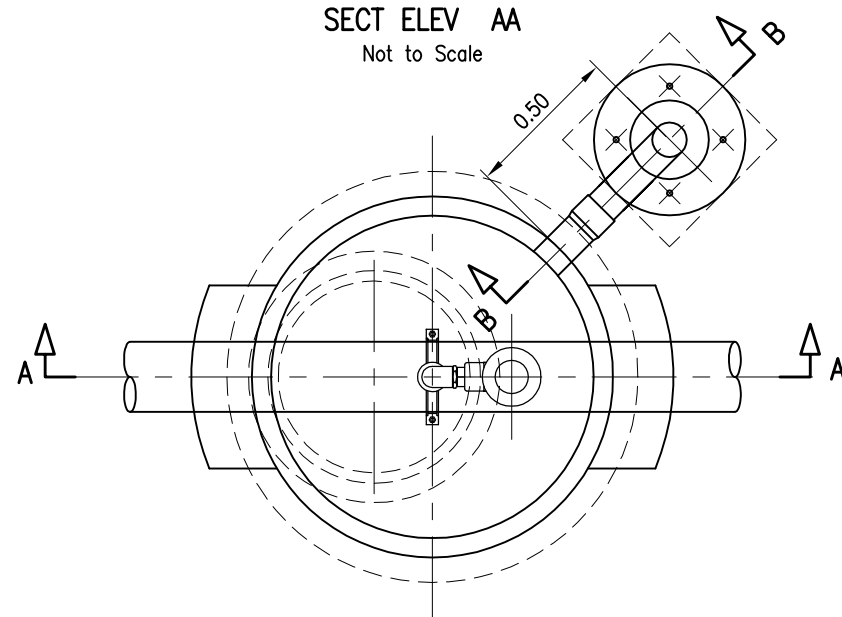


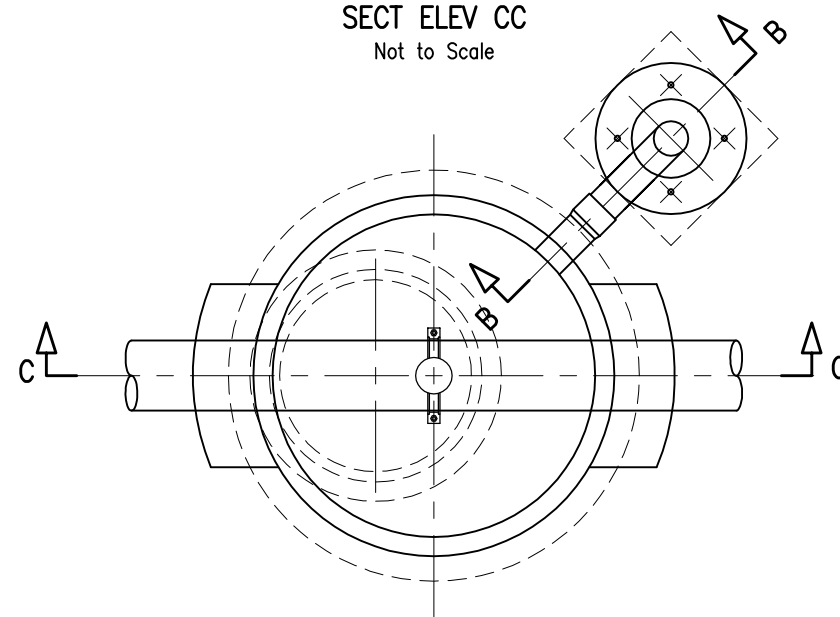
SECT ELEV BB
Not to Scale



SECT ELEV CC
Not to Scale



PLAN
AIR VALVE (SEWER R/MAIN)
TYPICAL DETAILS
Not to Scale



PLAN
AIR VALVE (EFFLUENT R/MAIN)
TYPICAL DETAILS
Not to Scale

ITEMS SCHEDULE (SEWER R/MAIN)

ITEM	DESCRIPTION	DIA (mm)	REQD
1	Tapping Band (Screwed)	??x50	1
2	SS Elbow (Screwed) M&F	50	1
3	SS Nipple (Screwed) M&M	50	1
4	SS Ball Valve (Screwed) F&F	50	1
5	SS Elbow (Screwed) M&F	50	1
6	GFR "Vent Master" Air Valve	50	1
7	Vent Pipe	—	1
8	RC Shaft (length to suit)	1050	1
9	RC Converter Slab	1050	1
10	RC Surround & CI Cover	600	1

ITEMS SCHEDULE (EFFLUENT R/MAIN)

ITEM	DESCRIPTION	DIA (mm)	REQD
1	Tapping Band (Screwed)	200x25	1
2	Brass Nipple (Screwed) M&M	25	1
3	Brass Ball Valve (Screwed) F&F	25	1
4	"Vent-o-Mat" Air Valve (Screwed)	25	1
5	RC Shaft (length to suit)	1050	1
6	RC Converter Slab	1050	1
7	RC Surround & CI Cover	600	1

NOTES:

- All dimensions are in metres unless otherwise shown.
- Concrete to be 32MPa and in accordance with AS. 1379 and AS. 3600.
- Reinforcement to be in accordance with AS. 1304.
- All flanges to be in accordance with AS. 2129 – Table C U.N.O.
- Air Valve marker posts to be installed in accordance with CMDM Dwg SD-W-060-LSC.
- Precast Reinforced Concrete Chamber components to be Humes 1050 Access Chamber Epoxy Jointed or similar approved equivalent.
- RC Converter Slab, RC Surround & CI Cover to be rotated to provide optimum access to pit.
- RC Surround to be supplied with Cast Iron frame to suit solid Cast Iron bolt down San Sew Cover.
- For details of Vent Pole refer to CMDM Dwg SD-S-070-LSC.
- Where foundation bearing pressure is less than 50 kPa, excavate and replace unsatisfactory material with compacted CBR15 material to the depth ordered by the Works Supervisor.

REVISIONS	APPROVED	RPEQ	DATE
A		5424	2/2/07

DISCLAIMER.
The authors and sponsoring organisations shall have no liability or responsibility to the user or any other person or entity with respect to any liability, loss or damage caused or alleged to be caused, directly or indirectly, by the adoption and use of these Standard Drawings including, but not limited to, any interruption of service, loss of business or anticipatory profits, of consequential damages resulting from the use of these Standard Drawings. Persons must not rely on these Standard Drawings as the equivalent of, or a substitute for, project-specific design and assessment by an appropriately qualified professional.

**Capricorn Municipal
Development Guidelines**

Incorporating:
Rockhampton City Council
Livingstone Shire Council
Fitzroy Shire Council
Mount Morgan Shire Council

**AIR VALVE
CONSTRUCTION DETAILS**
Livingstone Shire Council

STANDARD
STANDARD DRAWING SD-S-072-LSC
REV.
A