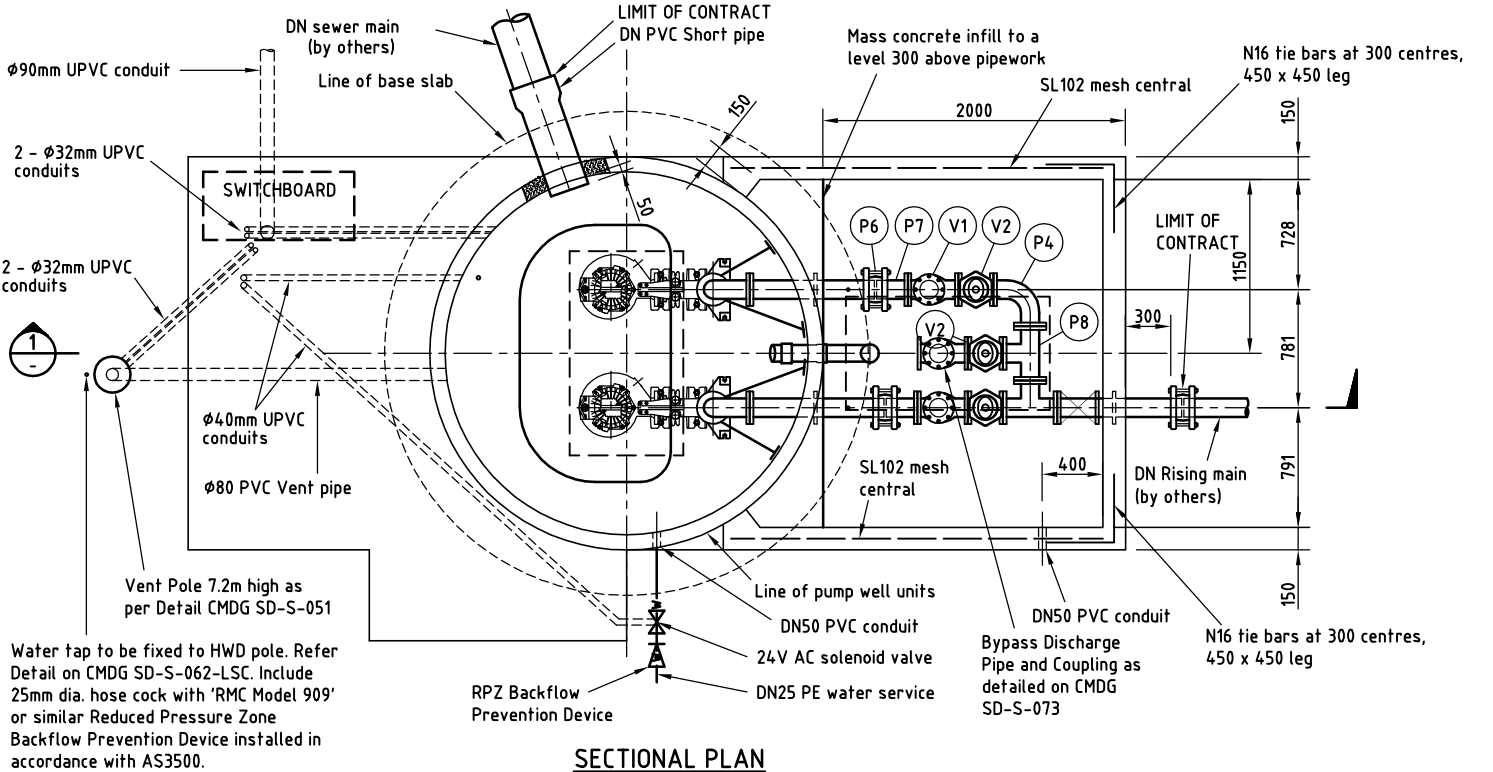
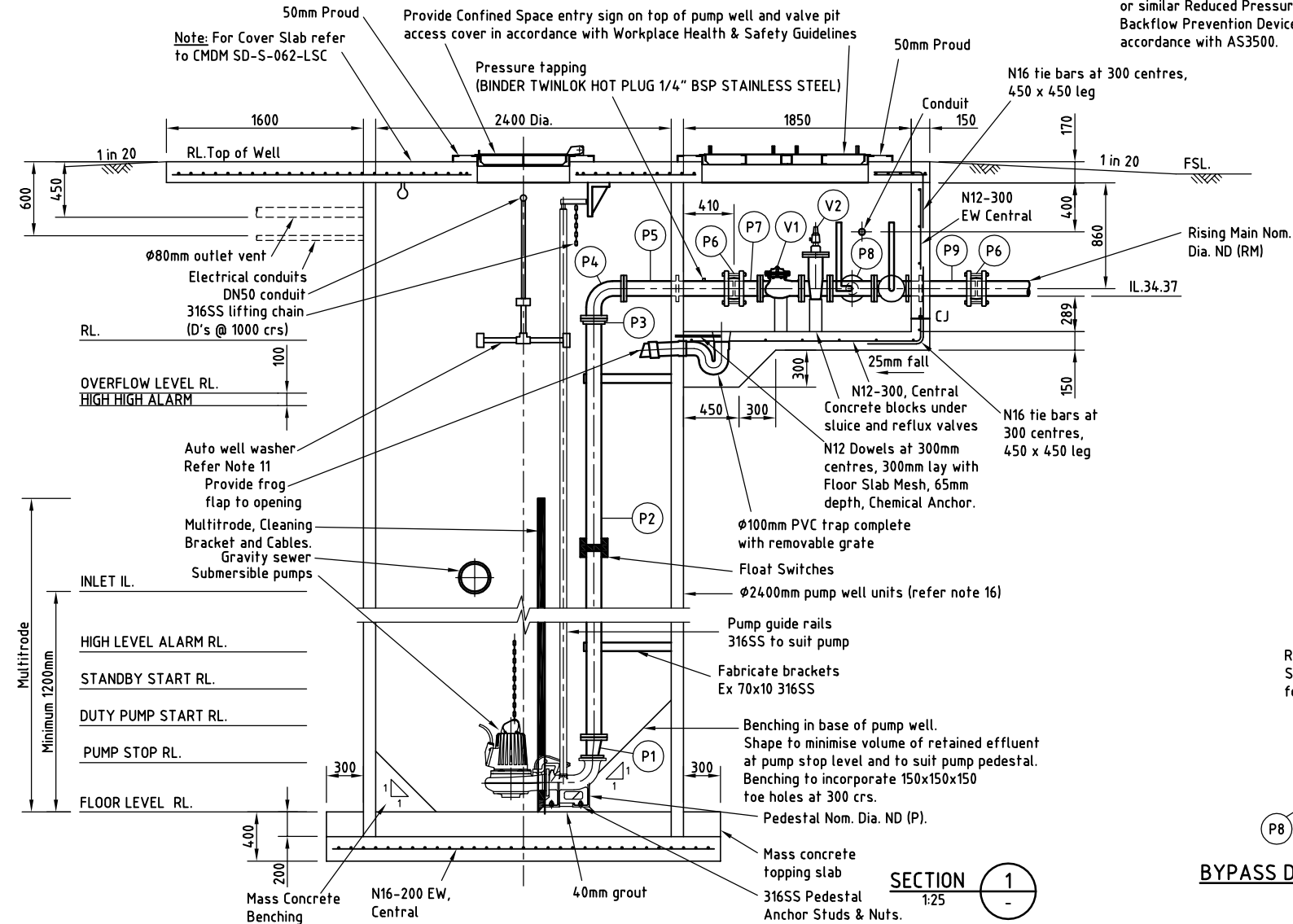


TABLE OF FITTINGS

No.	DESCRIPTION	DIA.	No. OFF
P1x	Fl Eccentric Taper	ND(P) ND(RM)	2
P2x	Fl/Pl pipe x length to suit	ND(RM)	3
P3x	Uniflange	ND(RM)	3
P4x	Fl 90° bend	ND(RM)	4
P5x	Fl/PL pipe x length to suit with "puddle" flange and 1/4" BSP Pressure tapping	ND(RM)	2
P6x	Gibault joint	ND(RM)	3
P7x	Fl/Pl connector	ND(RM)	2
P8x	Fl Tee	ND(RM) x ND(RM)	2
P10x	80mm Camlock Coupling	80	1
P9	Fl/PL pipe x length to suit with "puddle" flange	ND(RM)	1
V1	Fl reflux valve (AS2658) with Magnetic Limit Switch	ND(RM)	2
V2	Fl vertical gate valve (AS3578) (Clockwise Close)	ND(RM)	4

x Epoxy coated as specified.

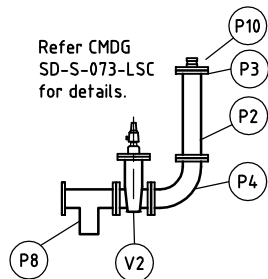


SECTIONAL PLAN

1:25

NOTES

- All concrete shall have a minimum characteristic strength (F'c) of N40 to AS3600 at 28 days.
- Cored holes left in the well for pipework shall be tapered being 25 larger in diameter than the flange at the inside face and 50 larger at the outside face.
- Steel wire fabric to be in accordance with A.S.1304, latest revision.
- Steel reinforcing bars shall be high-tensile hot-rolled deformed bar in accordance with AS.1302, latest revision.
- Laps in reinforcing shall be 300 minimum for rebar and 1 (one) mesh spacing for fabric.
- Concrete cover to reinforcement shall be a minimum of 65 in all cases except where noted otherwise.
- Stainless steel pipe brackets at 1000 maximum centres fixed to wall with 2-M10 SS. approved Masonry Fasteners.
- Location of conduits to be confirmed by Council Engineer prior to construction of plinth.
- All pipework penetration to be grouted up using non shrink grout.
- The concrete surface shall be smooth and free from holes and lightly sandbasted or acid-etched before painting.
- The concrete surface shall have cured for not less than 28 days.
- Auto well washer to be secured to the pump well wall via a pivoting wall mount bracket supplied by the Manufacturer. Provide 4 - grade 316 SS Dynabolts or equivalent for wall mount. 24V AC solenoid valve for well washer to be connected to a relay in the main switchboard. Provide 25mm 'RMC Model 909' or equivalent Reduced Pressure Zone backflow prevention device installed in accordance with AS 3500. Solenoid valve must be installed between RPZ and washer head. Water inlet for washer head is 3/4" BSP (NPT) male. Exact position of washer to be confirmed by Superintendent.
- All pipes and fittings within pump well and valve pit to be FBE (Fusion Bonded Epoxy) coated.
- All conduits from pump well to be filled with an approved viod filler following installation of cables.
- All UPVC conduits and pipework location to be subject to Council Engineers prior approval.
- Confirm pump stop level with Manufacturer for minimum submergence requirements.
- Pump Duty and Pump selection to be confirmed by Council Engineer.
- Switchboard to have 1m clearance to any obstructions.



BYPASS DISCHARGE PIPE DETAILS

1:25

Drawing Register		
Council	Applicable	ApplicableDrawing
FSC	No	SD-S-061
RCC	No	SD-S-061
LSC	Yes	
ESC	No	SD-S-061
PDSC	No	SD-S-061
BSC	No	SD-S-061
MMSC	No	SD-S-061

REVISIONS	APPROVED	RPEQ	DATE
A			

DISCLAIMER.
The authors and sponsoring organisations shall have no liability or responsibility to the user or any other person or entity with respect to any liability, loss or damage caused or alleged to be caused, directly or indirectly, by the adoption and use of these Standard Drawings including, but not limited to, any interruption of service, loss of business or anticipatory profits, of consequential damages resulting from the use of these Standard Drawings. Persons must not rely on these Standard Drawings as the equivalent of, or a substitute for, project-specific design and assessment by an appropriately qualified professional.

Capricorn Municipal Development Manual
Rockhampton City, Livingstone Shire, Fitzroy Shire, Mount Morgan Shire, Bauhinia Shire, Peak Downs Shire & Emerald Shire

SUBMERSIBLE SEWERAGE PUMPING STATION
GENERAL ARRANGEMENT
2400mm DIA.

STANDARD	
DRAWING	
SD-S-061A	
REV.	A